

Product datasheet for **AP11077PU-N**

UBE2I (N-term) Rabbit Polyclonal Antibody

Product data:

Product Type:	Primary Antibodies
Applications:	IHC, WB
Recommended Dilution:	ELISA: 1/1,000. Western blot: 1/100~1/500. Immunohistochemistry: 1/50~1/100.
Reactivity:	Human
Host:	Rabbit
Isotype:	Ig
Clonality:	Polyclonal
Immunogen:	This antibody is generated from rabbits immunized with a KLH conjugated synthetic peptide selected from the N-terminal region of human UBE2I.
Specificity:	This antibody is specific to UBE2I (N-term). Predicted to cross react with Mouse and DANRE (100% Antigen Homology).
Formulation:	PBS containing 0.09% (W/V) Sodium Azide as preservative. State: Purified State: Liquid purified Ig fraction.
Concentration:	lot specific
Purification:	Protein G Chromatography, eluted with high and low pH buffers and neutralized immediately, followed by dialysis against PBS.
Conjugation:	Unconjugated
Storage:	Store the antibody undiluted at 2-8°C for one month or (in aliquots) at -20°C for longer. Avoid repeated freezing and thawing.
Stability:	Shelf life: one year from despatch.
Gene Name:	ubiquitin conjugating enzyme E2 I
Database Link:	Entrez Gene 7329 Human P63279

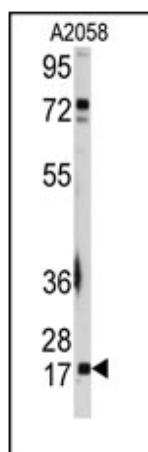
[View online »](#)

Background:

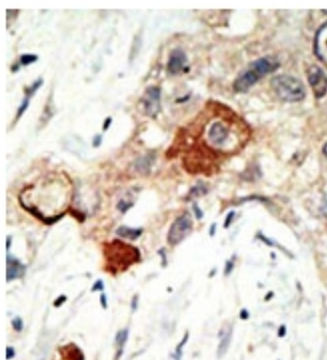
UBE2I (Ubc9) is a member of the E2 family and is specific for the conjugation of SUMO to a variety of target proteins. SUMO conjugation to target proteins is mediated by a different, but analogous, pathway to ubiquitinylation. This E2 is unusual in that it interacts directly with protein substrates that are modified by sumoylation, and may play a role in substrate recognition. UBE2I can mediate the conjugation of SUMO-1 to a variety of proteins including RanGAP1, IkbAlpha, and PML without the requirement of an E3 ligase. UBE2I is essential for nuclear architecture and chromosome segregation.

Synonyms:

UBCE9, Ube2i, Ubce2i, SUMO-protein ligase

Product images:


Western blot analysis of anti-UBE2I Antibody (N-term) in A2058 cell line lysates (35ug/lane). UBE2I (arrow) was detected using the purified Pab.



Formalin-fixed and paraffin-embedded human cancer tissue reacted with the primary antibody, which was peroxidase-conjugated to the secondary antibody, followed by AEC staining. This data demonstrates the use of this antibody for immunohistochemistry; clinical relevance has not been evaluated.