

## Product datasheet for **AP11074PU-N**

### Dnmt3l Rabbit Polyclonal Antibody

#### Product data:

Product Type:	Primary Antibodies
Applications:	WB
Recommended Dilution:	<b>ELISA:</b> 1/1000. <b>Western Blot:</b> 1/100-1/500.
Reactivity:	Human, Mouse
Host:	Rabbit
Isotype:	Ig
Clonality:	Polyclonal
Immunogen:	KLH conjugated synthetic peptide between 392~421 amino acids from the Mouse Dnmt3L sequence within the last 100 aa.
Specificity:	This antibody is specific to Mouse Dnmt3L. It may recognize the Human homolog (44 kDa)
Formulation:	PBS containing 0.09% (W/V) Sodium Azide as preservative State: Purified State: Liquid purified Ig fraction
Concentration:	lot specific
Purification:	Protein G Chromatography, eluted with high and low pH buffers and neutralized immediately, followed by dialysis against PBS
Conjugation:	Unconjugated
Storage:	Store undiluted at 2-8°C for one month or (in aliquots) at -20°C for longer. Avoid repeated freezing and thawing.
Stability:	Shelf life: one year from despatch.
Gene Name:	DNA (cytosine-5-)-methyltransferase 3-like
Database Link:	<a href="#">Entrez Gene 54427 Mouse</a> <a href="#">Q9CWR8</a>



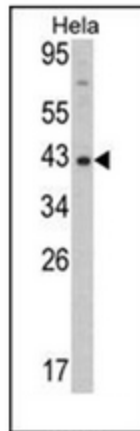
[View online »](#)

**Background:**

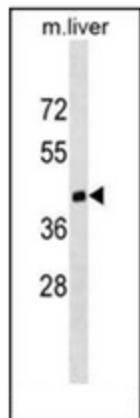
mDnmt3L (DNA methyltransferase 3L) does not appear to be catalytically active due to loss of the critical active site residues. It may function not directly as a DNA methyltransferase but rather as a regulator of methylation at imprinted loci. It is required specifically for the establishment of genomic imprints but is dispensable for their propagation. It is essential for the de novo methylation of single-copy DNA sequences. The protein is well-express in testis, thymus, ovary, and heart. mDnmt3L, which belongs to the 5-cytosine methyltransferase family, contains 1 ADD-type zinc finger.

**Synonyms:**

MGC1090

**Product images:**


Western blot analysis of Mouse Dnmt3L Antibody in HeLa cell line lysates (35ug/lane). Dnmt3l (arrow) was detected using the purified Pab."''



Western blot analysis of Mouse Dnmt3L Antibody in mouse liver tissue lysates (35ug/lane). This demonstrates the Dnmt3l antibody detected the Dnmt3l protein (arrow).