

Product datasheet for **AP11064PU-N**

FBXL11 (KDM2A) Rabbit Polyclonal Antibody

Product data:

Product Type:	Primary Antibodies
Applications:	IHC, WB
Recommended Dilution:	Western Blot: 1/1000. Immunohistochemistry: 1/10~1/50.
Reactivity:	Human
Host:	Rabbit
Isotype:	Ig
Clonality:	Polyclonal
Immunogen:	This antibody is generated from rabbits immunized with a KLH conjugated synthetic peptide at the Center (500-527) of human JHDM1a/FBXL11.
Specificity:	This antibody is specific to JHDM1a/FBXL11 (Center). Predicted to cross react with Mouse (100% Antigen Homology).
Formulation:	PBS containing 0.09% (W/V) Sodium Azide as preservative. State: Purified State: Liquid purified Ig fraction.
Concentration:	lot specific
Purification:	Saturated Ammonium Sulfate (SAS) precipitation followed by dialysis against PBS.
Conjugation:	Unconjugated
Storage:	Store the antibody undiluted at 2-8°C for one month or (in aliquots) at -20°C for longer. Avoid repeated freezing and thawing.
Stability:	Shelf life: one year from despatch.
Gene Name:	lysine demethylase 2A
Database Link:	Entrez Gene 22992 Human Q9Y2K7



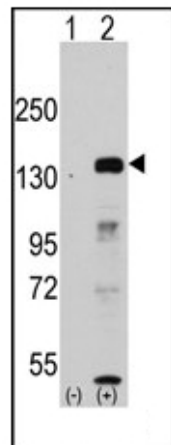
[View online »](#)

Background:

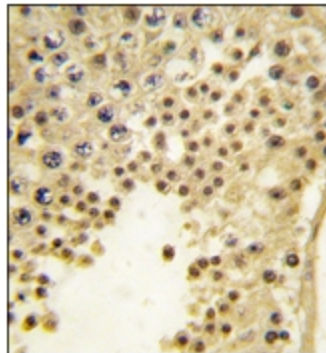
JHDM1a/FBXL11 is a member of the F-box protein family which is characterized by an approximately 40 amino acid motif, the F-box. The F-box proteins constitute one of the four subunits of ubiquitin protein ligase complex called SCFs (SKP1-cullin-F-box), which function in phosphorylation-dependent ubiquitination. The F-box proteins are divided into 3 classes: Fbws containing WD-40 domains, Fbls containing leucine-rich repeats, and Fbxs containing either different protein-protein interaction modules or no recognizable motifs. The protein encoded by this gene belongs to the Fbls class and, in addition to an F-box, contains at least 6 highly degenerated leucine-rich repeats.

Synonyms:

Lysine-specific demethylase 2A, CXXC8, FBL7, JHDM1A, KIAA1004, Lilina

Product images:

Western blot analysis of JHDM1a/FBXL11 (arrow) using rabbit polyclonal JHDM1a/FBXL11 Antibody (Center). 293 cell lysates (2 ug/lane) either nontransfected (Lane 1) or transiently transfected with the JHDM1a/FBXL11 gene (Lane 2) (Origene Technologies).



Formalin-fixed and paraffin-embedded human testis tissue reacted with JHDM1a/FBXL11 antibody (Center), which was peroxidase-conjugated to the secondary antibody, followed by DAB staining. This data demonstrates the use of this antibody for immunohistochemistry; clinical relevance has not been evaluated.