

Product datasheet for **AP11043PU-N**

HIF1AN (C-term) Rabbit Polyclonal Antibody

Product data:

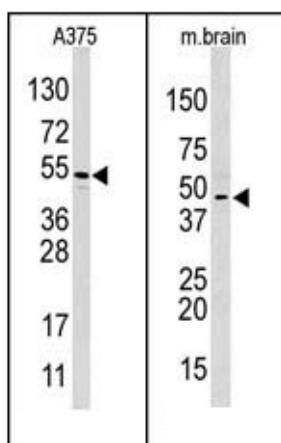
Product Type:	Primary Antibodies
Applications:	WB
Recommended Dilution:	ELISA: 1/1,000. Western Blot: 1/250-1/500.
Reactivity:	Human, Mouse
Host:	Rabbit
Isotype:	Ig
Clonality:	Polyclonal
Immunogen:	This antibody is generated from rabbits immunized with a KLH conjugated synthetic peptide selected from the C-terminal region of human HIF1AN.
Specificity:	This antibody will recognize HIF1AN (C-term). It's predicted to cross react with Mouse and Danre (100% Antigen Homology).
Formulation:	PBS containing 0.09% (W/V) Sodium Azide as preservative. State: Purified State: Liquid purified Ig fraction.
Concentration:	lot specific
Purification:	Protein A Chromatography, eluted with high and low pH buffers and neutralized immediately, followed by dialysis against PBS.
Conjugation:	Unconjugated
Storage:	Store the antibody undiluted at 2-8°C for one month or (in aliquots) at -20°C for longer. Avoid repeated freezing and thawing.
Stability:	Shelf life: one year from despatch.
Gene Name:	hypoxia inducible factor 1 alpha subunit inhibitor
Database Link:	Entrez Gene 55662 Human Q9NWT6
Background:	FIH1 Encoded protein (factor inhibiting HIF-1) is a co-repressor that interacts with hypoxia-inducible factor 1 (HIF-1) alpha and the von Hippel-Lindau tumor suppressor protein to mediate repression of HIF-1 transcriptional activity.



[View online »](#)

Synonyms: Factor inhibiting HIF-1

Product images:



Western blot analysis of anti-HIF1AN (C-term) Pab in A375 and mouse brain cell line lysate. HIF1AN (C-term) (arrow) was detected using the purified Pab.