

Product datasheet for **AP11023PU-N**

Protein C (PROC) Rabbit Polyclonal Antibody

Product data:

Product Type:	Primary Antibodies
Applications:	WB
Recommended Dilution:	ELISA: 1/5,000. Western Blot: 1/1000.
Host:	Rabbit
Isotype:	Ig
Clonality:	Polyclonal
Immunogen:	KLH conjugated synthetic peptide encoding the Protein-C epitope tag (CEDQVDPRLIDGK) was used as antigen.
Specificity:	This antibody is specific to Protein-C Tag.
Formulation:	PBS containing 0.09% (W/V) Sodium Azide as preservative. State: Purified State: Liquid purified Ig fraction.
Concentration:	lot specific
Purification:	Protein G Chromatography, eluted with high and low pH buffers and neutralized immediately, followed by dialysis against PBS.
Conjugation:	Unconjugated
Storage:	Store the antibody undiluted at 2-8°C for one month or (in aliquots) at -20°C for longer. Avoid repeated freezing and thawing.
Stability:	Shelf life: one year from despatch.
Gene Name:	protein C, inactivator of coagulation factors Va and VIIIa
Database Link:	P04070
Background:	Epitope tags consisting of short sequences recognized by well-characterized antibodies have been widely used in the study of protein expression in various systems. The epitope tag composed of a 12 residue peptide, EDQVDPRLIDGK, is derived from Protein-C, a vitamin K-dependent serine protease that regulates blood coagulation by inactivating factors Va and VIIIa in the presence of calcium ions and phospholipids. This polyclonal antibody provides a simple solution to detect the expression of a Protein-C epitope-tagged protein in cells.



[View online »](#)

Synonyms: Protein C Epitope tag, C tag, C-Tag

Product images:

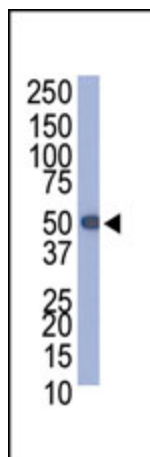


Figure 1. Western blot analysis of anti-Protein-C tag Pab (Cat. #AP11023PU-N) in Protein-C-tagged recombinant protein bacterial lysate.