

Product datasheet for **AP11020PU-N**

Pk (V5) Epitope Tag (GKIPNPLLGLDST) Rabbit Polyclonal Antibody

Product data:

Product Type:	Primary Antibodies
Applications:	WB
Recommended Dilution:	ELISA: 1/1000. Western Blot: ~1/1000.
Host:	Rabbit
Isotype:	Ig
Clonality:	Polyclonal
Immunogen:	KLH conjugated synthetic peptide encoding the V5 tag (GKIPNPLLGLDST) was used as antigen.
Formulation:	PBS containing 0.09% (W/V) Sodium Azide as preservative. State: Purified State: Liquid purified Ig fraction.
Concentration:	lot specific
Purification:	Protein G Chromatography, eluted with high and low pH buffers and neutralized immediately, followed by dialysis against PBS.
Conjugation:	Unconjugated
Storage:	Store undiluted at 2-8°C for one month or (in aliquots) at -20°C for longer. Avoid repeated freezing and thawing.
Stability:	Shelf life: one year from despatch.
Background:	Epitope tags consisting of short sequences recognized by well-characterized antibodies have been widely used in the study of protein expression in various systems. The V5 epitope tag is composed of a 14 residue peptide, GKIPNPLLGLDST, derived from a small epitope (Pk) present on the P and V proteins of the paramyxovirus of simian virus 5 (SV5). This polyclonal antibody provides a simple solution to detect the expression of a V5-tagged protein in cells.



[View online »](#)

Product images:

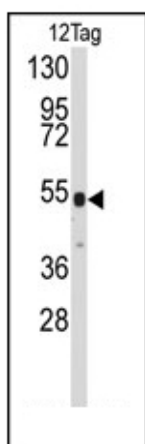


Figure 1. Western blot analysis of anti-V5 Tag Antibody (Cat.#AP11020PU-N) in 12tag protein (35ug/lane). 12 Tag (arrow) was detected using the purified Pab.

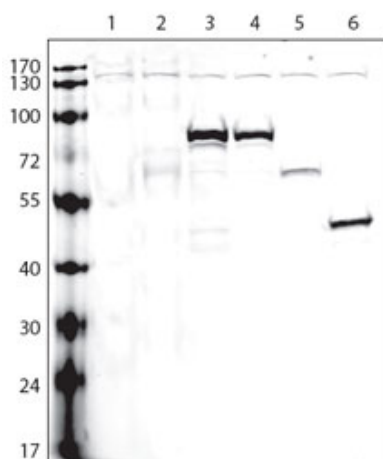


Figure 2. Lanes: 1:non-transfected cells; 2:V5-tagged empty plasmid; 3:protein A (V5-tagged); 4:protein B (V5-tagged); 5:protein C (V5-tagged); 6:protein D (V5-tagged); Protocol and data courtesy of Dr. Gustavo Gutierrez, Burnham Institute for Medical Rese