

Product datasheet for **AP10554PU-N**

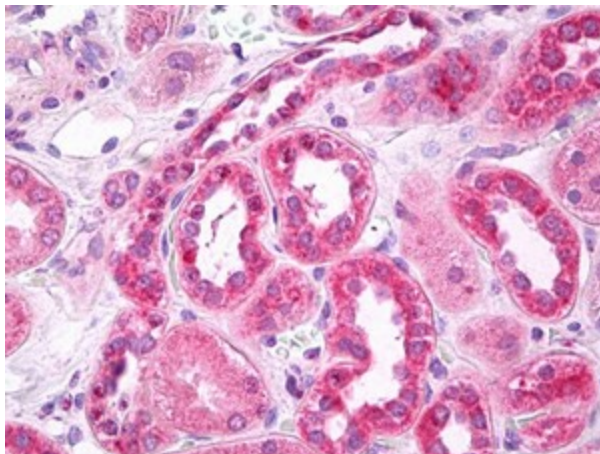
Slc6a11 Rabbit Polyclonal Antibody

Product data:

Product Type:	Primary Antibodies
Applications:	ELISA, IHC, WB
Recommended Dilution:	Immunohistochemistry: 1/50 - 1/500. ELISA. Western Blot: 1/200 - 1/5000.
Reactivity:	Human, Mouse, Rat
Host:	Rabbit
Clonality:	Polyclonal
Immunogen:	A 15 residue synthetic peptide derived from C-terminal domain of rat GAT-3
Specificity:	This antibody reacts with GAT-3 from rat, mouse and human central nervous system.
Formulation:	0.1M Tris, 0.1M Glycine, 2% Sucrose State: Purified State: Lyophilized purified powder
Reconstitution Method:	Restore in distilled water.
Concentration:	lot specific
Purification:	Affinity chromatography on Protein A
Conjugation:	Unconjugated
Storage:	Prior to reconstitution store at -20°C. Following reconstitution store undiluted at 2-8°C for one month or (in aliquots) at -20°C for longer. Avoid repeated freezing and thawing.
Stability:	Shelf life: one year from despatch.
Gene Name:	solute carrier family 6 member 11
Database Link:	Entrez Gene 79213 Rat P31647
Synonyms:	GABT3, GAT-3



[View online »](#)

Product images:

Kidney stained in IHC-P with GAT-3 antibody