

## Product datasheet for **AP10445PU-N**

### **NMDAR1 (GRIN1) Rabbit Polyclonal Antibody**

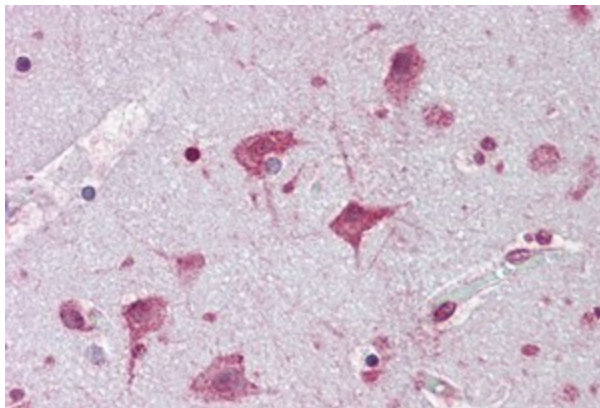
#### **Product data:**

<b>Product Type:</b>	Primary Antibodies
<b>Applications:</b>	IHC
<b>Recommended Dilution:</b>	Western Blot, Immunohistochemistry, ELISA.
<b>Reactivity:</b>	Human
<b>Host:</b>	Rabbit
<b>Clonality:</b>	Polyclonal
<b>Immunogen:</b>	Synthetic peptide derived from Cter domain of human NMD-R1 protein
<b>Specificity:</b>	This antibody reacts with NMD-R1 protein. Do not react with isoforms 3, 1 and 2 of human NMD-R1.
<b>Formulation:</b>	0.1M Tris 0.1M Glycine, 2% Sucrose State: Purified State: Lyophilized purified powder Preservative: None
<b>Reconstitution Method:</b>	Restore in distilled water.
<b>Concentration:</b>	lot specific
<b>Purification:</b>	Affinity Chromatography on Protein A
<b>Conjugation:</b>	Unconjugated
<b>Storage:</b>	Prior to reconstitution store at -20°C. Following reconstitution store undiluted at 2-8°C for one month or (in aliquots) at -20°C for longer. Avoid repeated freezing and thawing.
<b>Stability:</b>	Shelf life: one year from despatch.
<b>Gene Name:</b>	glutamate ionotropic receptor NMDA type subunit 1
<b>Database Link:</b>	<a href="#">Entrez Gene 2902 Human</a> <a href="#">Q05586</a>
<b>Synonyms:</b>	NMDAR1,GRIN1



[View online »](#)

**Product images:**



Brain stained with IHC-P with NMD-R1 antibody