

## Product datasheet for **AP10441PU-N**

### Transglutaminase 2 (TGM2) Rabbit Polyclonal Antibody

#### Product data:

Product Type:	Primary Antibodies
Applications:	ELISA, IHC, WB
Recommended Dilution:	<b>ELISA.</b> <b>Western Blot:</b> 1/200-1/1000. <b>Immunohistochemistry:</b> 1/200-1/2000.
Reactivity:	Human
Host:	Rabbit
Clonality:	Polyclonal
Immunogen:	A 15 residue synthetic peptide derived from specific domain of Human TG2 protein (tTG)
Specificity:	Reacts with Human 77 kDa TGM2 protein. This antibody does not cross reacts with Guinea Pig or any isoformes.
Formulation:	0.1M Tris, 0.1M Glycine and 2% Sucrose State: Purified State: Lyophilized purified powder Preservative: None
Reconstitution Method:	Restore in distilled water.
Concentration:	lot specific
Purification:	Affinity Chromatography on Protein A
Conjugation:	Unconjugated
Storage:	Prior to reconstitution store the antibody at -20°C. Store reconstituted antibody at 2-8°C for one month or (in aliquots) at -20°C for longer Avoid repeated freezing and thawing.
Stability:	Shelf life: one year from despatch.
Gene Name:	transglutaminase 2
Database Link:	<a href="#">Entrez Gene 7052 Human P21980</a>



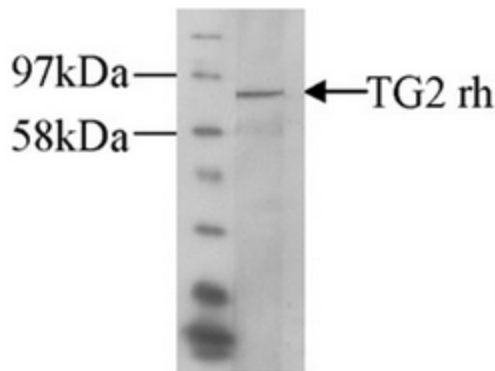
[View online »](#)

**Background:**

Transglutaminase II catalyzes calcium-dependent post-translational modification of proteins by formation of an isopeptide bond within or between polypeptide chains. It is also known as TGC, tTG, type II-, Gh, cytosolic-, liver-, endothelial-, erythrocyte-, cellular-transglutaminase. Different tissues and cell types express varying amounts of tissue transglutaminase with a markedly high expression in rheumatoid lesions. It is implicated in programmed cell death, signal transduction, drug-resistance, cell growth, endocytosis, insulin secretion, cell adhesion, cataract formation, and wound healing.

**Synonyms:**

TGase C, TGase-H, Tissue transglutaminase

**Product images:**


Western Blot (10% gel) with TGM2 antibody Cat.-No AP10441PU-N

