

Product datasheet for **AP10434PU-N**

Lysozyme (LYZ) Rabbit Polyclonal Antibody

Product data:

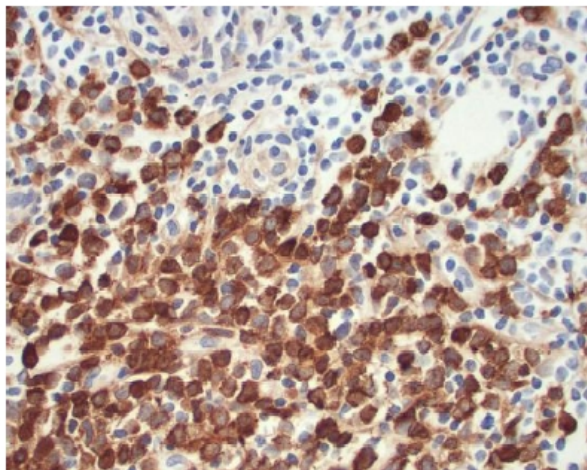
Product Type:	Primary Antibodies
Applications:	IHC
Recommended Dilution:	Immunohistochemistry on Formalin-Fixed, Paraffin-Embedded Sections: 1/50-1/200 Pretreatment of tissue with proteolytic enzymes should be performed prior to staining. Use Polymer anti Mouse/Rabbit IgG as a detection system. <i>Positive Control:</i> Myeloid leukemia.
Reactivity:	Canine, Feline, Human, Monkey, Porcine
Host:	Rabbit
Clonality:	Polyclonal
Immunogen:	Human Lysozyme purified from the urine of patients with monocytic leukemia.
Specificity:	The antibody was adsorbed with Human plasma and urine proteins to remove the cross-reacting antibodies. It labels myeloid cells, histiocytes, granulocytes, macrophages, and monocytes. This antibody is helpful in the identification of myeloid or monocytic nature of acute leukemia. Cellular Localization: Cytoplasmic.
Formulation:	State: Purified State: Liquid purified IgG fraction with 0.2% BSA and 15mM Sodium Azide.
Conjugation:	Unconjugated
Storage:	Store the antibody undiluted at 2-8°C.
Stability:	Shelf life: one year from despatch.
Gene Name:	lysozyme
Database Link:	Entrez Gene 4069 Human P61626
Background:	Lysozyme catalyzes the hydrolysis of certain mucopolysaccharides of bacterial cell walls. Specifically, it catalyzes the hydrolysis of the bacterial cell wall beta glycosidic linkages between N acetylmuramic acid and N acetylglucosamine. It is found in spleen, lung, kidney, white blood cells, plasma, saliva, milk, and tears. Lysozyme is synthesized predominantly in reactive histiocytes rather than in resting, unstimulated phagocytes.
Synonyms:	LYZ, LZM



[View online »](#)

Protein Families: Druggable Genome

Product images:



Formalin-Fixed, Paraffin-Embedded Human granulocytic sarcoma involving skin stained with Lysozyme antibody Cat.-No. AP10434PU-N using peroxidase conjugate and DAB chromogen. Note the cytoplasmic staining of tumor cells.