

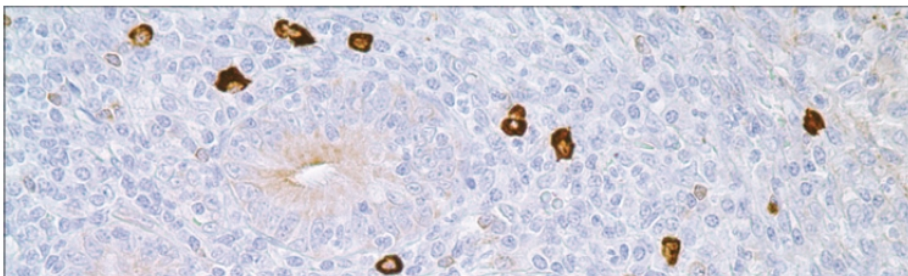
## Product datasheet for **AP10433PU-N**

### Human IgM Rabbit Polyclonal Antibody

#### Product data:

Product Type:	Secondary Antibodies
Product Name:	Human IgM Rabbit Polyclonal Antibody
Applications:	IHC
Recommended Dilution:	<b>Immunohistochemistry on Formalin-Fixed, Paraffin-Embedded Sections:</b> 1/50-1/200 Pretreatment of deparaffinized tissue with heat-induced epitope retrieval is recommended. Use Polymer anti Mouse/Rabbit immunoglobulin as a detection system. <i>Positive Control:</i> Lymph node.
Reactivity:	Human
Host:	Rabbit
Immunogen:	Purified IgM.
Formulation:	State: Purified State: Liquid purified ig fraction with 0.2% BSA and 15mM Sodium Azide.
Conjugation:	Unconjugated
Storage:	Store the antibody undiluted at 2-8°C.

#### Product images:



Formalin-Fixed, Paraffin-Embedded Human lymph node stained with IgM antibody Cat.-No. AP10433PU-N using peroxidase conjugate and DAB chromogen. Note cytoplasmic staining of plasma cells.



[View online »](#)