

## Product datasheet for **AP10429PU-N**

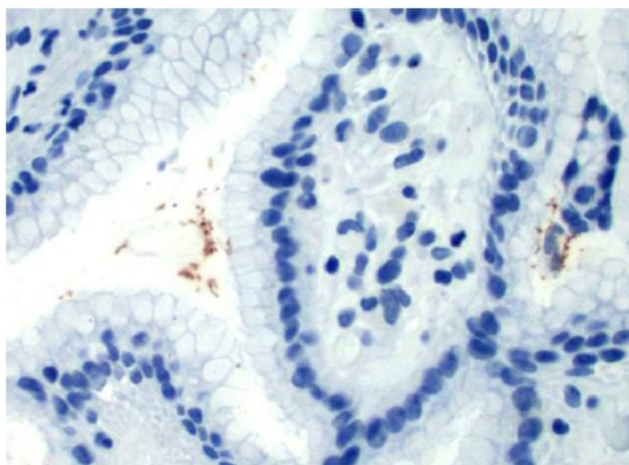
### Helicobacter pylori Rabbit Polyclonal Antibody

#### Product data:

Product Type:	Primary Antibodies
Applications:	IHC
Recommended Dilution:	<b>Immunohistochemistry on Formalin-Fixed, Paraffin-Embedded Sections:</b> 1/100-1/200 Pretreatment of deparaffinized tissue with heat-induced epitope retrieval is recommended. Use Polymer anti Mouse/Rabbit IgG as a detection system. <i>Positive Control:</i> Helicobacter pylori infected tissue.
Reactivity:	Helicobacter pylori
Host:	Rabbit
Clonality:	Polyclonal
Immunogen:	Total lyaste of <i>Helicobacter pylori</i> .
Specificity:	This antibody recognises <i>Helicobacter pylori</i> .
Formulation:	State: Purified State: Liquid purified Total IgG fraction with 0.2% BSA and 15mM Sodium Azide.
Purification:	Protein A Chromatography
Conjugation:	Unconjugated
Storage:	Store the antibody undiluted at 2-8°C.
Stability:	Shelf life: one year from despatch.
Background:	The spiral shaped bacterium <i>Helicobacter Pylori</i> is strongly associated with inflammation of the stomach and is also implicated in the development of gastric malignancy. <i>Helicobacter Pylori</i> is known to cause peptic ulcers and chronic gastritis in human. It is associated with duodenal ulcers and may be involved in development of adenocarcimona and low grade lymphoma of mucosa associated lymphoid tissue in the stomach. More recently this bacterium has also been implicated with a number of vascular disorders including heart disease. It is not clear how <i>H. pylori</i> is transmitted or why some patients become symptomatic while others do not. The bacteria are most likely spread from person to person through fecal to oral or oral to oral routes. Possible environmental reservoirs include contaminated water sources. Serological tests that measure specific <i>H. pylori</i> IgG antibodies can determine if a person has been infected although these methods do have drawbacks and limitations.
Synonyms:	H. pylori



[View online »](#)

**Product images:**

Formalin-Fixed, Paraffin-Embedded Human stomach sections stained with H. pylori antibody Cat.-No. AP10429PU-N using peroxidase conjugate and DAB chromogen. Note intense staining of H. Pylori organisms on the surface of gastric epithelial cells.