

Product datasheet for **AP10423PU-N**

Complement C3 (C3) Rabbit Polyclonal Antibody

Product data:

Product Type:	Primary Antibodies
Applications:	IHC
Recommended Dilution:	Immunohistochemistry on Formalin-Fixed, Paraffin-Embedded Sections: 1/50-1/200 Pretreatment of deparaffinized tissue with heat-induced epitope retrieval is recommended. Use Polymer anti Mouse/Rabbit IgG as a detection system. <i>Positive Control:</i> Acute rejected kidney transplant.
Reactivity:	Human
Host:	Rabbit
Clonality:	Polyclonal
Immunogen:	Synthetic peptide corresponding to C3d
Specificity:	Recognizes Complement C3d. Cellular Localization: Membrane or cytoplasmic.
Formulation:	State: Purified State: Liquid purified ig fraction with 0.2% BSA and 15mM Sodium Azide.
Conjugation:	Unconjugated
Storage:	Store the antibody undiluted at 2-8°C.
Stability:	Shelf life: one year from despatch.
Gene Name:	complement component 3
Database Link:	Entrez Gene 604 Human Entrez Gene 718 Human P01024



[View online »](#)

Background:

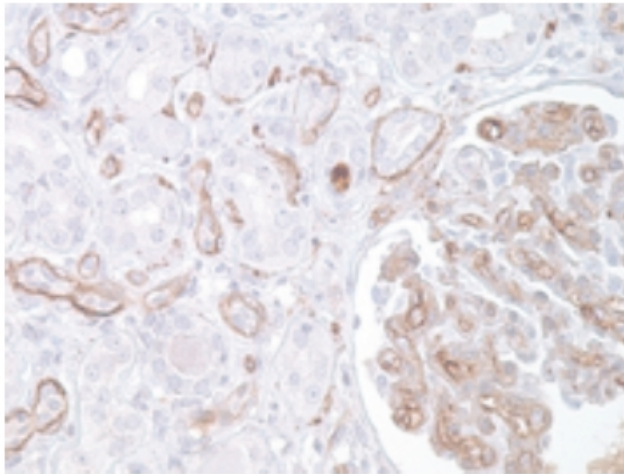
Complement component C3 plays a central role in the activation of complement system. Its activation is required for both classical and alternative complement activation pathways. C3d deposition in the renal transplant PTCs (peritubular capillaries) is indicative of AR (acute rejection) with subsequent high probability of graft loss. Anti-C3d, combined with anti-C4d, can be utilized as a tool for diagnosis of AR and warrant prompt and aggressive anti-rejection treatment. It was shown that anti-C3d labeled the epidermal basement membrane in 97% (31/32) cases of bullous pemphigoid (BP), with none of the normal controls demonstrating such findings. In the same study 27% (3/11) cases of pemphigus vulgaris (PV) demonstrated intercellular C3d deposition. Therefore, C3d immunohistochemistry is a helpful adjunct in the diagnosis of BP (and perhaps PV), especially in the cases in which only formalin-fixed, paraffin embedded tissue is available for analysis.

Synonyms:

CPAMD1, Complement component 3

Protein Families:

Druggable Genome, Transcription Factors

Product images:

Formalin-Fixed, Paraffin-Embedded Human transplanted kidney stained with C3d antibody Cat.-No. AP10423PU-N using peroxidase conjugate and DAB chromogen. Note basement membrane staining of renal tubules and glomeruli.