

Product datasheet for **AP10420PU-N**

5HT6 Receptor (HTR6) (C-term) Rabbit Polyclonal Antibody

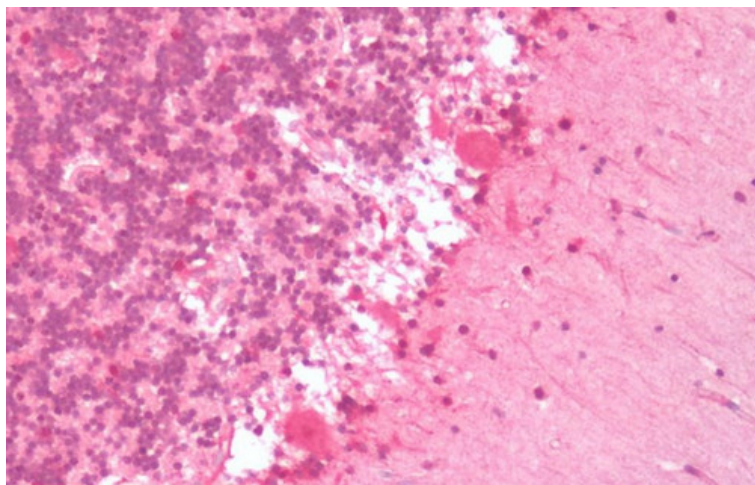
Product data:

Product Type:	Primary Antibodies
Applications:	IHC
Recommended Dilution:	Immunohistochemistry on Paraffin Sections: 2.5 - 5 µg/ml.
Reactivity:	Human
Host:	Rabbit
Clonality:	Polyclonal
Immunogen:	HTR6 / 5-HT6 Receptor antibody was raised against synthetic 17 amino acid peptide from C-terminus of human HTR6 / 5-HT6. Percent identity with other species by BLAST analysis: Human, Chimpanzee, Gorilla (100%); Monkey, Horse (94%); Gibbon, Dog, Rabbit (88%); Elephant (82%).
Specificity:	The antibody recognizes the human Serotonin (5-hydroxytryptamine) receptor 6. Other species not tested. Epitope: C-terminal domain of human.
Formulation:	PBS, pH 7.7, containing 0.09% sodium azide State: Aff - Purified State: Liquid purified Ig fraction
Concentration:	lot specific
Purification:	Peptide immunogen affinity chromatography
Conjugation:	Unconjugated
Storage:	Store undiluted at 2-8°C for one month or (in aliquots) at -20°C for longer. Avoid repeated freezing and thawing.
Stability:	Shelf life: one year from despatch.
Gene Name:	5-hydroxytryptamine receptor 6
Database Link:	Entrez Gene 3362 Human P50406

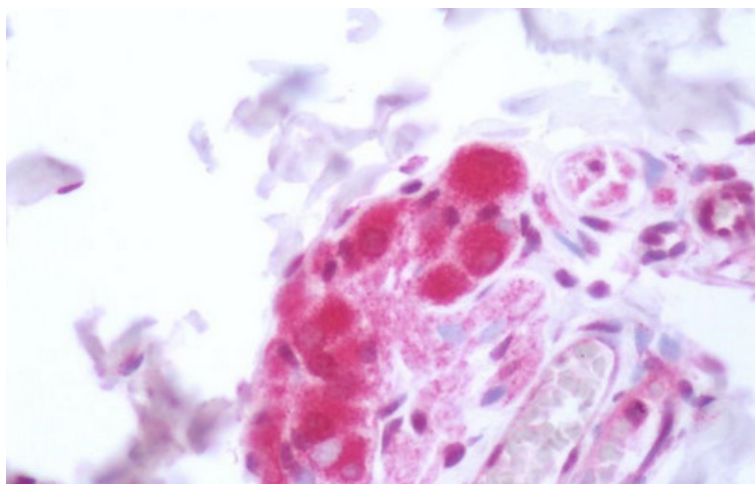


[View online »](#)

- Background:** 5-HT6 (HTR6) is a receptor for 5-hydroxytryptamine (Serotonin), a biogenic hormone that functions as a neurotransmitter, a hormone, and a mitogen. 5-HT6 has been reported primarily in striatum of the brain. Expression has also been seen in stomach, spinal cord, and the lymphoid tissues of rats, including peripheral blood lymphocytes, spleen, and thymus.
- Synonyms:** 5-hydroxytryptamine receptor 6, 5-HT-6
- Protein Families:** Druggable Genome, GPCR, Transmembrane
- Protein Pathways:** Calcium signaling pathway, Neuroactive ligand-receptor interaction

Product images:

Human Brain, Cerebellum: Formalin-Fixed, Paraffin-Embedded (FFPE)



Human Small Intestine: Formalin-Fixed, Paraffin-Embedded (FFPE)