

Product datasheet for **AP10415PU-N**

TGFBI Goat Polyclonal Antibody

Product data:

Product Type:	Primary Antibodies
Applications:	ELISA, IHC, WB
Recommended Dilution:	Peptide ELISA: Detection Limit Dilution: 1/32000. Western Blot: 0.2-0.5 µg/ml. Approx 70kDa band observed in Human, Mouse and Rat Kidney lysates (calculated MW of 74.7kDa according to Human NP_000349.1). Immunohistochemistry on Paraffin Sections: 4-6 µg/ml. In paraffin embedded Kidney shows staining of intercalated cells of a collecting tubule.
Reactivity:	Canine, Human, Mouse, Rat
Host:	Goat
Clonality:	Polyclonal
Immunogen:	Peptide with sequence from the Internal region of the protein sequence according to NP_000349.1.
Specificity:	Recognizes TGFBI/BIGH3.
Formulation:	Tris saline, pH 7.3 containing 0.02% Sodium Azide as preservative and 0.5% BSA as stabilizer. State: Aff - Purified State: Liquid purified IgG fraction.
Concentration:	lot specific
Purification:	Ammonium Sulphate Precipitation followed by Antigen Affinity Chromatography using the immunizing peptide.
Conjugation:	Unconjugated
Storage:	Store undiluted at 2-8°C for one month or (in aliquots) at -20°C for longer. Avoid repeated freezing and thawing.
Stability:	Shelf life: one year from despatch.
Gene Name:	transforming growth factor beta induced
Database Link:	Entrez Gene 7045 Human Q15582



[View online »](#)

Background:

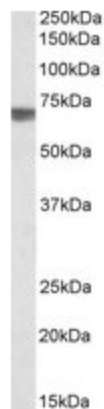
TGFBI, also known as BIGH3 and β ig-h3, is an extracellular matrix protein induced by transforming growth factor (TGF)-beta 1. TGFBI protein is involved in cell growth, cell differentiation, wound healing and cell adhesion. In addition, some missense mutations of TGFBI were identified in families affected with human autosomal dominant corneal dystrophies. BIGH3 gene encodes for a 683 amino-acid protein containing an RGD motif and four internal repeated domains which have highly conserved sequences founded in several species (Fascin domain).

Synonyms:

Beta ig-h3, RGD-CAP, Kerato-epithelin

Product images:


TGFBI antibody staining of Human Kidney lysate at 0.3 ug/ml (35ug protein in RIPA buffer). Primary incubation was 1 hour. Detected by chemiluminescence.



TGFBI antibody staining of paraffin embedded Human Kidney at 3.8 ug/ml. Steamed antigen retrieval with citrate buffer pH 6, AP-staining.