

Product datasheet for **AP10057PU-N**

PRDM1 (C-term) Goat Polyclonal Antibody

Product data:

Product Type:	Primary Antibodies
Applications:	ELISA, WB
Recommended Dilution:	Peptide ELISA: 1/2000 (Detection Limit). Western blot: 1-3 µg/ml. Approx 100kDa band observed in Human Brain (cerebellum) lysates (calculated MW of 91.8kDa according to NP_001189.2 and of 76.8 according to NP_878911.1).
Reactivity:	Bovine, Canine, Human, Mouse, Porcine, Rat
Host:	Goat
Clonality:	Polyclonal
Immunogen:	Peptide with sequence C-KVKQETVEPMDP, from the C-Terminus of the protein sequence according to NP_001189.2; NP_878911.1.
Specificity:	This antibody is expected to recognize both reported isoforms (NP_001189.2 and NP_878911.1).
Formulation:	Tris saline, pH~7.3 State: Aff - Purified State: Liquid purified Ig fraction Stabilizer: 0.5% BSA Preservative: 0.02% Sodium Azide
Concentration:	lot specific
Purification:	Ammonium Sulphate Precipitation followed by Antigen Affinity Chromatography using the immunizing peptide.
Conjugation:	Unconjugated
Storage:	Store undiluted at 2-8°C for one month or (in aliquots) at -20°C for longer. Avoid repeated freezing and thawing.
Stability:	Shelf life: one year from despatch.
Gene Name:	PR domain 1
Database Link:	Entrez Gene 12142 Mouse Entrez Gene 309871 Rat Entrez Gene 639 Human O75626



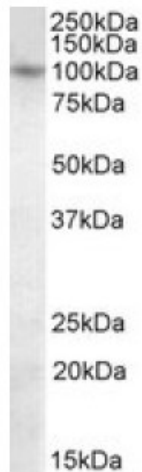
[View online »](#)

Background: PRDM1/Blimp1 is a repressor of beta-interferon gene expression. This action is exerted by binding to the PRDI (positive regulatory domain I element) of the beta-IFN gene promoter. The transcription of this gene is increased upon virus induction.

Synonyms: BLIMP-1, PRDI-BF1, PRDI-binding factor 1

Protein Families: Transcription Factors

Product images:



Anti-PRDM1 (1ug/ml) staining of Human Brain (cerebellum) lysate (35ug protein in RIPA buffer). Primary incubation was 1 hour. Detected by chemiluminescence.