

Product datasheet for **AP10054PU-N**

MTMR9 (C-term) Goat Polyclonal Antibody

Product data:

Product Type:	Primary Antibodies
Applications:	FC, IF, IHC, PEP-ELISA
Recommended Dilution:	Peptide ELISA: 1/8000 (Detection Limit). Western blot: No signal obtained yet but low background observed in Human Brain and Kidney lysates at up to 1µg/ml. Immunohistochemistry on Paraffin Sections: 5-10 µg/ml. In paraffin embedded Rat Spleen shows staining of cytoplasm in select cells. This product has been successfully used on Rat Hypothalamus.
Reactivity:	Canine, Human, Rat, Bovine, Mouse, Porcine
Host:	Goat
Clonality:	Polyclonal
Immunogen:	Peptide with sequence C-AELETEDGMQESP, from the C Terminus of the protein sequence according to NP_056273.2.
Specificity:	This antibody reacts to the C terminus of MTMR9.
Formulation:	Tris saline, pH~7.3 State: Aff - Purified State: Liquid purified Ig fraction Stabilizer: 0.5% BSA Preservative: 0.02% Sodium Azide
Concentration:	lot specific
Purification:	Antigen Affinity Chromatography
Conjugation:	Unconjugated
Storage:	Store undiluted at 2-8°C for one month or (in aliquots) at -20°C for longer. Avoid repeated freezing and thawing.
Stability:	Shelf life: one year from despatch.
Gene Name:	myotubularin related protein 9
Database Link:	Entrez Gene 282584 Rat Entrez Gene 66036 Human Q96QG7

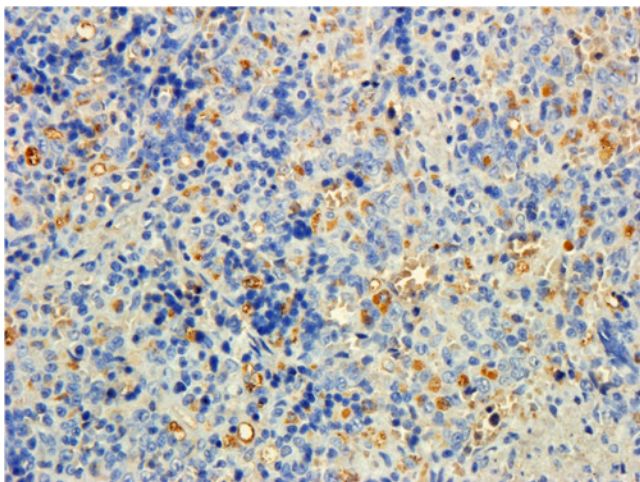


[View online »](#)

Synonyms: Myotubularin-related protein 9, C8orf9, MTMR8

Protein Families: Druggable Genome, Phosphatase

Product images:



AP10054PU-N (5ug/ml) staining of paraffin embedded Rat Spleen. Steamed antigen retrieval with citrate buffer pH 6, DAB-staining.