

Product datasheet for **AP10053PU-N**

EB3 (MAPRE3) Goat Polyclonal Antibody

Product data:

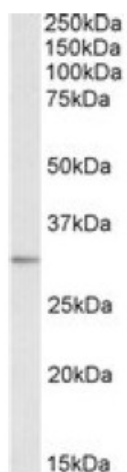
Product Type:	Primary Antibodies
Applications:	ELISA, WB
Recommended Dilution:	Peptide ELISA: 1/64000 (Detection Limit). Western blot: 0.1-1.0 µg/ml. Approx 32kDa band observed in Human Brain (Cerebellum and Amygdala) and Mouse Brain lysates (calculated MW of 32kDa according to NP_036458.2).
Reactivity:	Bovine, Canine, Human, Mouse
Host:	Goat
Clonality:	Polyclonal
Immunogen:	Peptide with sequence SGRLSNVAPPCILR, from the internal region of the protein sequence according to NP_036458.2.
Specificity:	This antibody recognizes MAPRE3.
Formulation:	Tris saline, 0.02% Sodium Azide, pH~7.3 with 0.5% BSA State: Aff - Purified State: Liquid purified Ig fraction
Concentration:	lot specific
Purification:	Affinity Chromatography
Conjugation:	Unconjugated
Storage:	Store undiluted at 2-8°C for one month or (in aliquots) at -20°C for longer. Avoid repeated freezing and thawing.
Stability:	Shelf life: one year from despatch.
Gene Name:	microtubule associated protein RP/EB family member 3
Database Link:	Entrez Gene 22924 Human Q9UPY8
Background:	EB3 is a 282 amino acid homologue of EB1, a protein known to bind Adenomatous Polyposis Coli. It has been shown to bind to tubulin in vitro and microtubules in vivo. Northern blotting shows expressions to be mainly in brain, and to a lesser degree in muscle. EB3 interacts with APCL, a homologue of the tumor suppressor APC, and this interaction may be involved in the stabilization or extension of microtubules.



[View online »](#)

Synonyms: End-binding protein 3, EB1 protein family member 3, RP3, EB3

Product images:



Anti-MAPRE3 (0.1ug/ml) staining of Human Brain (Amygdala) lysate (35ug protein in RIPA buffer). Primary incubation was 1 hour. Detected by chemiluminescence.