

Product datasheet for **AP10042PU-N**

Glucose 6 phosphate isomerase (GPI) (81-93) Goat Polyclonal Antibody

Product data:

Product Type:	Primary Antibodies
Applications:	ELISA, IHC, WB
Recommended Dilution:	Peptide ELISA: 1/128000. Western blot: Approx 60kDa band observed in Human Heart lysates (calculated MW of 63.1kDa according to NP_000166.2). Recommended concentration: 0.1-0.3µg/ml. Immunohistochemistry on Paraffin Sections: 3.75 µg/ml. Paraffin embedded Human Testis, Thyroid and Kidney.
Reactivity:	Human, Porcine
Host:	Goat
Clonality:	Polyclonal
Immunogen:	Peptide with sequence C-RERMFNGEKINYT, from the internal region (near N Terminus) of the protein sequence according to NP_000166.2.
Specificity:	This antibody reacts to Neuroleukin.
Formulation:	Tris saline, 0.02% sodium azide, pH7.3 with 0.5% bovine serum albumin State: Aff - Purified State: Liquid purified Ig fraction
Concentration:	lot specific
Purification:	Affinity chromatography
Conjugation:	Unconjugated
Storage:	Store the antibody undiluted at 2-8°C for one month or (in aliquots) at -20°C for longer. Avoid repeated freezing and thawing.
Stability:	Shelf life: one year from despatch.
Gene Name:	glucose-6-phosphate isomerase
Database Link:	Entrez Gene 2821 Human P06744

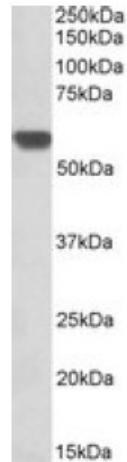


[View online »](#)

Background: Glucose 6 phosphate isomerase is a neurotrophic factor for spinal and sensory neurons. It is involved in glycolysis and gluconeogenesis. Defects in this protein are a cause of hereditary nonspherocytic hemolytic anemia. Glucose 6 phosphate isomerase deficiencies can be associated with hydrops fetalis, immediate neonatal death and neurological impairment.

Synonyms: Phosphoglucose isomerase, PGI, Phosphohexose isomerase, PHI, Neuroleukin, NLK

Product images:



Anti-GPI (0.3ug/ml) staining of Human Heart lysate (35ug protein in RIPA buffer). Primary incubation was 1 hour. Detected by chemiluminescence.