

Product datasheet for **AP10041PU-N**

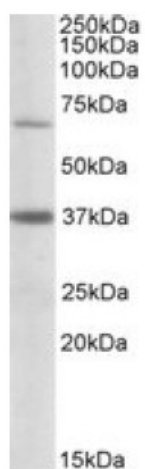
CPT2 Goat Polyclonal Antibody

Product data:

Product Type:	Primary Antibodies
Applications:	ELISA, WB
Recommended Dilution:	Peptide ELISA: 1/4000. Western blot: Experiments gave bands at approx 70kDa and 37kDa in Human Liver lysates. These bands correspond to earlier findings with different antibodies from other commercial sources. This protein has a calculated MW of 73.8kDa according to NP_000089.1. <u>Recommended concentration:</u> 1 - 3 µg/ml.
Reactivity:	Human
Host:	Goat
Clonality:	Polyclonal
Immunogen:	Peptide with sequence C-TDSTVTVQKLNFE, from the internal region of the protein sequence according to NP_000089.1.
Specificity:	This antibody reacts to CPT2.
Formulation:	Tris saline, 0.02% sodium azide, pH7.3 with 0.5% bovine serum albumin State: Aff - Purified State: Liquid purified Ig fraction
Concentration:	lot specific
Purification:	Affinity chromatography
Conjugation:	Unconjugated
Storage:	Store the antibody undiluted at 2-8°C for one month or (in aliquots) at -20°C for longer. Avoid repeated freezing and thawing.
Stability:	Shelf life: one year from despatch.
Gene Name:	carnitine palmitoyltransferase 2
Database Link:	<u>Entrez Gene 1376 Human P23786</u>
Background:	Carnitine palmitoyltransferase II (CPT2) together with carnitine palmitoyltransferase I oxidizes long-chain fatty acids in the mitochondria.
Synonyms:	Carnitine palmitoyltransferase II, CPT II



[View online »](#)

Product images:

Anti-CPT2 (0.5ug/ml) staining of Human Liver lysate (35ug protein in RIPA buffer). Primary incubation was 1 hour. Detected by chemiluminescence.