

Product datasheet for **AP10037PU-N**

PINX1 (225-237) Goat Polyclonal Antibody

Product data:

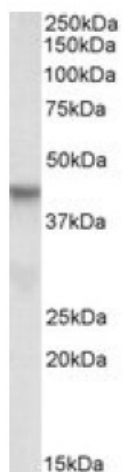
Product Type:	Primary Antibodies
Applications:	ELISA, WB
Recommended Dilution:	Peptide ELISA: 1/16000. Western blot: Approx 40kDa band observed in lysates of cell lines A549, HepG2 and K562 (calculated MW of 37.0kDa according to NP_060354.4). <u>Recommended concentration:</u> 0.3 - 1.0 µg/ml.
Reactivity:	Human
Host:	Goat
Clonality:	Polyclonal
Immunogen:	Peptide with sequence C-ESYLQPKAKRHTE, from the internal region of the protein sequence according to NP_060354.4.
Specificity:	This antibody reacts to PINX1.
Formulation:	Tris saline, 0.02% sodium azide, pH7.3 with 0.5% bovine serum albumin State: Aff - Purified State: Liquid purified Ig fraction
Concentration:	lot specific
Purification:	Affinity chromatography
Conjugation:	Unconjugated
Storage:	Store the antibody undiluted at 2-8°C for one month or (in aliquots) at -20°C for longer. Avoid repeated freezing and thawing.
Stability:	Shelf life: one year from despatch.
Gene Name:	PIN2/TERF1 interacting, telomerase inhibitor 1
Database Link:	<u>Entrez Gene 54984 Human</u> <u>Q96BK5</u>
Background:	PINX1 (PIN2-interacting protein 1) is a ubiquitously expressed protein that localizes to nucleoli and telomere speckles. It contains a TID (telomerase inhibiting domain) domain which is capable of binding MCRS1, TERT and TERF1 and has been shown to be a potent telomerase inhibitor and putative tumor suppressor.



[View online »](#)

Synonyms: Pin2-interacting protein X1, LPTL, LPTS

Product images:



Anti-PINX1 (0.3ug/ml) staining of HepG2 lysate (35ug protein in RIPA buffer). Primary incubation was 1 hour. Detected by chemiluminescence.