

Product datasheet for **AP10032PU-N**

KCNN2 Goat Polyclonal Antibody

Product data:

| | |
|-----------------------|--|
| Product Type: | Primary Antibodies |
| Applications: | ELISA, IHC, WB |
| Recommended Dilution: | Peptide ELISA: Detection Limit: 1/64000. Western blot: 0.3-1 µg/ml. Approx 70kDa and 23kDa bands observed in Human Liver lysates (calculated MW of 63.8kDa according to NP_067627.2 and of 26.3kDa according to NP_740721.1). Immunohistochemistry on Paraffin Sections: 1-2 µg/ml. In Paraffin Embedded Human Thyroid Gland shows membranous staining in the epithelial cells. |
| Reactivity: | Bovine, Canine, Human, Mouse, Rat |
| Host: | Goat |
| Clonality: | Polyclonal |
| Immunogen: | Peptide with sequence from the Internal region of the protein sequence according to NP_067627.2; NP_740721.1. |
| Specificity: | This antibody is expected to recognize both isoforms of KCNN2 (NP_067627.2; NP_740721.1). |
| Formulation: | Tris saline, pH~7.3 State: Aff - Purified State: Liquid purified IgG fraction Stabilizer: 0.5% BSA Preservative: 0.02% Sodium Azide |
| Concentration: | lot specific |
| Purification: | Ammonium Sulphate Precipitation followed by Antigen Affinity Chromatography using the immunizing peptide |
| Conjugation: | Unconjugated |
| Storage: | Store undiluted at 2-8°C for one month or (in aliquots) at -20°C for longer. Avoid repeated freezing and thawing. |
| Stability: | Shelf life: one year from despatch. |
| Gene Name: | potassium calcium-activated channel subfamily N member 2 |
| Database Link: | Entrez Gene 54262 Rat Entrez Gene 140492 Mouse Entrez Gene 3781 Human Q9H2S1 |



[View online »](#)

Background: A widely expressed protein forming a voltage-independent potassium channel activated by intracellular calcium. Activation is followed by membrane hyperpolarization. Thought to regulate neuronal excitability by contributing to the slow component of synaptic afterhyperpolarization. The channel is blocked by apamin.

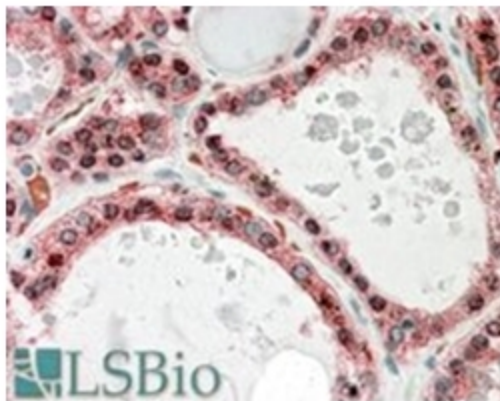
Synonyms: KCNN2, SK2

Protein Families: Druggable Genome, Ion Channels: Potassium, Transmembrane

Product images:



KCNN2 antibody staining of Human Liver lysate at 0.3 ug/ml (35ug protein in RIPA buffer). Primary incubation was 1 hour. Detected by chemiluminescence.



KCNN2 antibody staining of Paraffin Embedded Human Thyroid Gland at 3.8 ug/ml. Steamed antigen retrieval with citrate buffer pH 6, AP-staining.