

Product datasheet for **AP09877PU-N**

MASPIN (SERPINB5) Rabbit Polyclonal Antibody

Product data:

Product Type:	Primary Antibodies
Applications:	ELISA, IHC, WB
Recommended Dilution:	Sandwich ELISA: To detect Human Maspin by Sandwich ELISA (using 100 µl/well antibody solution) a concentration of 0.5-2.0 µg/ml of this antibody is required. This antigen affinity purified antibody, in conjunction with Biotinylated Anti-Human Maspin (Cat.-No AP09877BT-N or AP09877BT-S) as a detection antibody, allows the detection of at least 0.2-0.4 ng/well of recombinant Human Maspin. Western Blot: To detect Human Maspin by Western Blot analysis this antibody can be used at a concentration of 0.1-0.2 µg/ml. Used in conjunction with compatible secondary reagents the detection limit for recombinant Human Maspin is 1.5-3.0 ng/lane, under either reducing or non-reducing conditions. Immunohistochemistry on Paraffin Sections: This antibody stained formalin-fixed paraffin-embedded sections of human normal breast and human breast lobular carcinoma in situ. The recommended concentration is 7.8-15.625 ng/ml with an overnight incubation at 4°C. An HRP-labeled polymer detection system was used with a DAB chromogen. Optimal results for these conditions were achieved without antigen retrieval. <i>Tissue samples were provided by the Cooperative Human Tissue Network, which is funded by the National Cancer Institute.</i>
Reactivity:	Human
Host:	Rabbit
Clonality:	Polyclonal
Immunogen:	Highly purified E.coli derived 42.1 kDa recombinant Human Maspin (Cat.-No AR31112PU)
Specificity:	This antibody recognizes Maspin/SERPINB5.
Formulation:	PBS, pH 7.2 without preservatives. State: Aff - Purified State: Lyophilized (sterile filtered) purified Ig fraction.
Reconstitution Method:	Restore in sterile water to a concentration of 0.1-1.0 mg/ml.
Purification:	Affinity Chromatography employing an immobilized Human Maspin matrix.
Conjugation:	Unconjugated



[View online »](#)

Storage: Store lyophilized at 2-8°C for 6 months or at -20°C long term.
After reconstitution store the antibody undiluted at 2-8°C for one month or (in aliquots) at -20°C long term.
Avoid repeated freezing and thawing.

Stability: Shelf life: one year from despatch.

Gene Name: serpin family B member 5

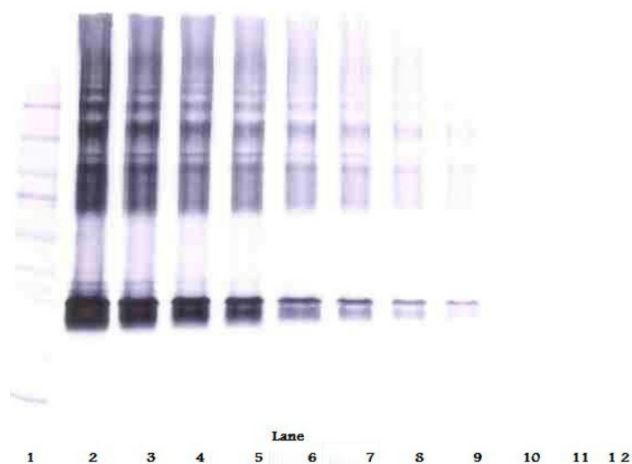
Database Link: [Entrez Gene 5268 Human P36952](#)

Background: MASPIN is a tumor suppressor. It blocks the growth, invasion, and metastatic properties of mammary tumors. As it does not undergo the S (stressed) to R (relaxed) conformational transition characteristic of active serpins, it exhibits no serine protease inhibitory activity.

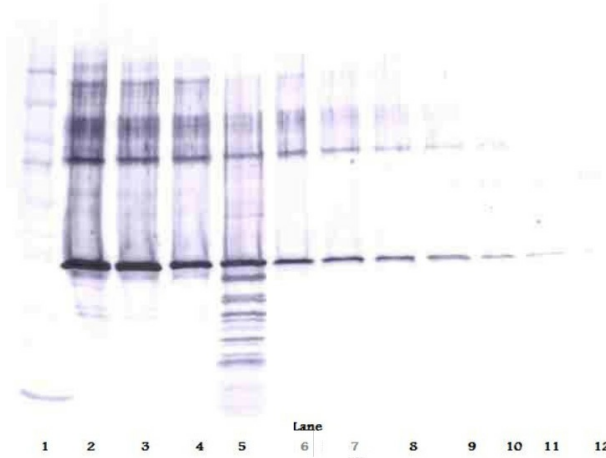
Synonyms: Serpin B5, PI5, PI-5

Note: Centrifuge vial prior to opening.

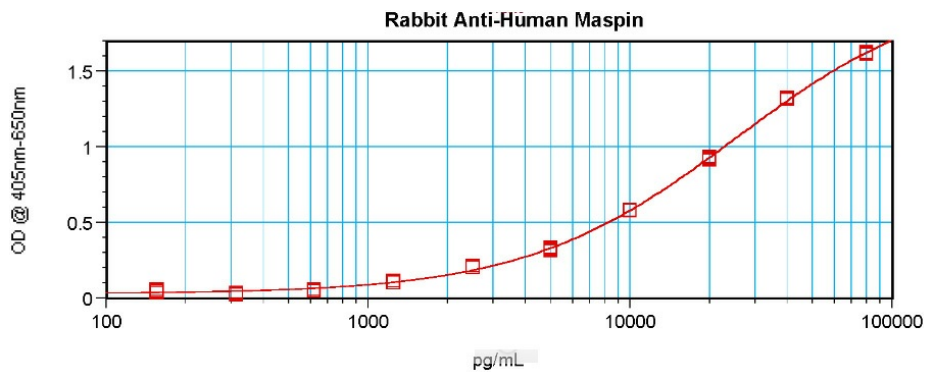
Product images:



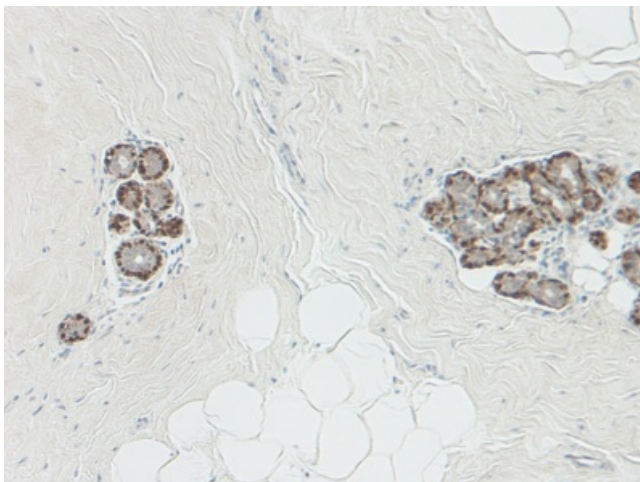
Western Blot (Unreduced) using Maspin Antibody
Cat.-No AP09877PU



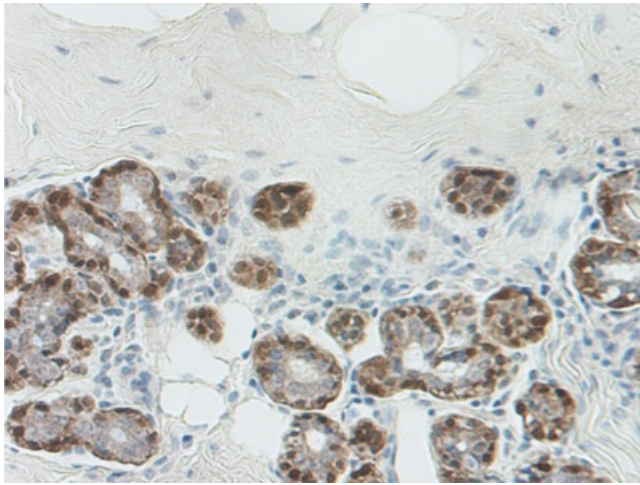
Western Blot (Reduced) using Maspin Antibody Cat.-No AP09877PU



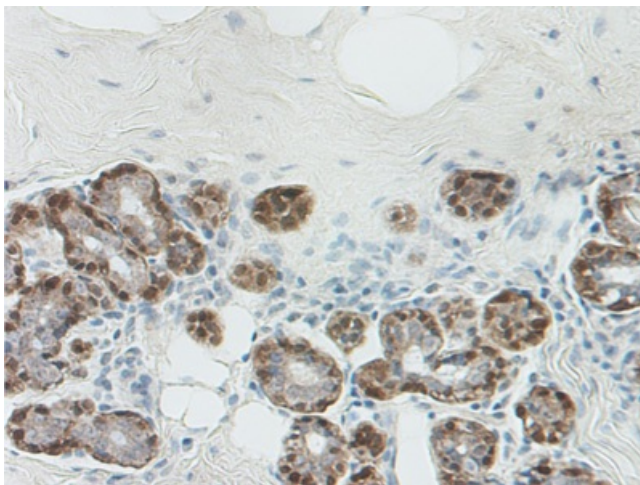
Sandwich ELISA using Maspin Antibody Cat.-No AP09877PU



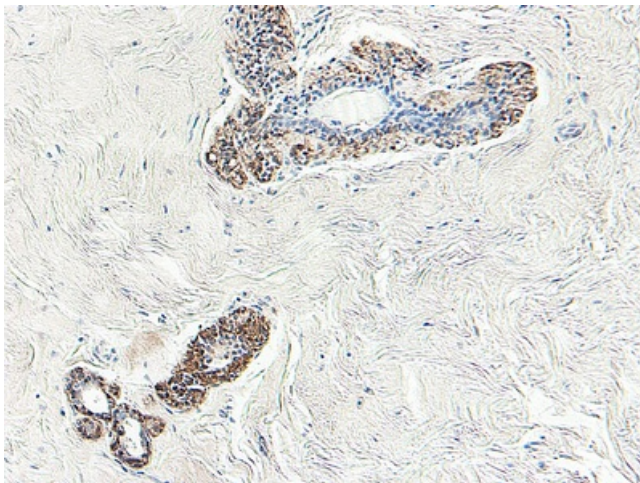
Formalin-Fixed Paraffin-Embedded Sections of Human breast lobular carcinoma in situ using Maspin Antibody Cat.-No AP09877PU at 7.8-15.625 ng/mL with an overnight incubation at 4°C. An HRP-labeled polymer detection system was used with a DAB chromogen.



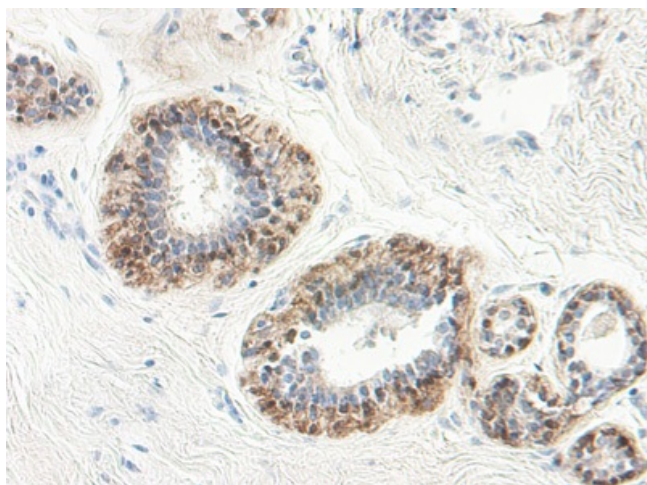
Formalin-Fixed Paraffin-Embedded Sections of Human breast lobular carcinoma in situ using Maspin Antibody Cat.-No AP09877PU at 7.8-15.625 ng/mL with an overnight incubation at 4°C. An HRP-labeled polymer detection system was used with a DAB chromogen.



Formalin-Fixed Paraffin-Embedded Sections of Human breast lobular carcinoma in situ using Maspin Antibody Cat.-No AP09877PU at 7.8-15.625 ng/mL with an overnight incubation at 4°C. An HRP-labeled polymer detection system was used with a DAB chromogen.



Formalin-Fixed Paraffin-Embedded Sections of Human normal breast in situ using Maspin Antibody Cat.-No AP09877PU at 7.8-15.625 ng/mL with an overnight incubation at 4°C. An HRP-labeled polymer detection system was used with a DAB chromogen.



Formalin-Fixed Paraffin-Embedded Sections of Human normal breast in situ using Maspin Antibody Cat.-No AP09877PU at 7.8-15.625 ng/mL with an overnight incubation at 4°C. An HRP-labeled polymer detection system was used with a DAB chromogen.