

Product datasheet for **AP09628PU-N**

Neurofilament (NEFM) Goat Polyclonal Antibody

Product data:

Product Type:	Primary Antibodies
Applications:	ELISA, WB
Recommended Dilution:	Peptide ELISA: 1/128000. Western blot: 0.03-0.1 µg/ml. Approx 170-200kDa band observed in Mouse Brain lysates (calculated MW of 102kDa according to NP_005373.2). The observed molecular weight corresponds to earlier findings with different antibodies from other commercial sources.
Reactivity:	Bovine, Canine, Human, Mouse, Porcine, Rat
Host:	Goat
Clonality:	Polyclonal
Immunogen:	Peptide with sequence C-QASHITVERKDYLK, from the internal region of the protein sequence
Specificity:	This antibody is expected to recognize reported isoform 1 (NP_005373.2) only.
Formulation:	Tris saline, 0.02% sodium azide, pH7.3 with 0.5% bovine serum albumin State: Aff - Purified State: Liquid purified Ig fraction
Concentration:	lot specific
Purification:	Affinity chromatography
Conjugation:	Unconjugated
Storage:	Store the antibody undiluted at 2-8°C for one month or (in aliquots) at -20°C for longer. Avoid repeated freezing and thawing.
Stability:	Shelf life: one year from despatch.
Gene Name:	neurofilament, medium polypeptide
Database Link:	Entrez Gene 4741 Human P07197



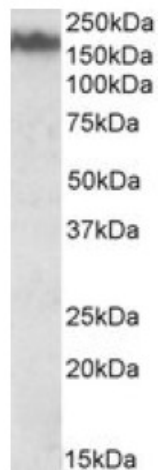
[View online »](#)

Background:

Neurofilaments are the 10nm or intermediate filament proteins found specifically in neurons, and are composed predominantly of three major proteins called neurofilament light (NF-L), neurofilament medium (NF-M) and neurofilament heavy (NF-H). Neurofilament medium runs on SDS-PAGE gels in the range 145-170 kDa, with some variation in different species. Antibodies to this protein are useful to identify neurons and their processes in tissue sections and in tissue culture. Neurofilament medium can also be useful in studies of neurofilament accumulations seen in many neurological diseases, such as Lou Gehrig's disease or Alzheimer's disease.

Synonyms:

Neurofilament medium polypeptide, NF-M, NEF3, NEFM, Neurofilament 3, (Neuronal Marker)

Product images:

Neurofilament M Antibody (0.03ug/ml) staining of Mouse Brain lysate (35ug protein in RIPA buffer). Primary incubation was 1 hour. Detected by chemiluminescence.