

## Product datasheet for **AP09510PU-N**

### **ErbB 3 (ERBB3) Rabbit Polyclonal Antibody**

#### **Product data:**

Product Type:	Primary Antibodies
Applications:	IF
Recommended Dilution:	Immunofluorescence: 1/100 - 1/200.
Reactivity:	Human
Host:	Rabbit
Clonality:	Polyclonal
Immunogen:	Synthesized non-phosphopeptide derived from human Her3/ErbB3 around the phosphorylation site of Tyr1289 (Q-G-YPE-E)
Specificity:	Her3/ErbB3 Antibody detects endogenous levels of total Her3/ErbB3 protein.
Formulation:	Phosphate buffered saline (without Mg <sup>2+</sup> and Ca <sup>2+</sup> ), pH 7.4, 150mM NaCl, 0.02% sodium azide and 50% glycerol State: Aff - Purified State: Liquid purified Ig
Concentration:	lot specific
Purification:	Affinity chromatography
Conjugation:	Unconjugated
Storage:	Store the antibody at -20°C. Avoid repeated freezing and thawing.
Stability:	Shelf life: one year from despatch.
Gene Name:	erb-b2 receptor tyrosine kinase 3
Database Link:	<a href="#">Entrez Gene 2065 Human P21860</a>

[View online »](#)

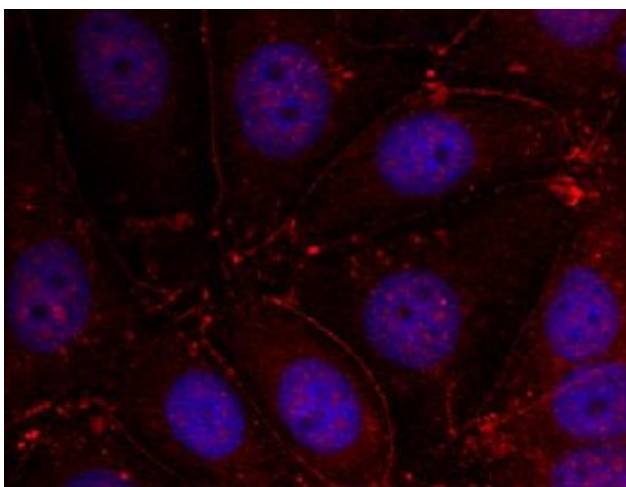
**Background:** The ErbB3 gene encodes a member of the epidermal growth factor receptor (EGFR) family of receptor tyrosine kinases. ErbB3 is a membrane-bound protein which has a neuregulin binding domain but not an active kinase domain. It can therefore bind this ligand but cannot convey a signal into the cell via protein phosphorylation. However it does form heterodimers with other EGF receptor family members which do have kinase activity. Heterodimerization leads to the activation of pathways which lead to cell proliferation or differentiation. Amplification of this gene and/or overexpression of its protein have been reported in numerous cancers including prostate, bladder and breast tumors. Alternate transcriptional splice variants encoding different isoforms have been characterized. One isoform lacks the intermembrane region and is secreted outside the cell. This form acts to modulate the activity of the membrane-bound form. Additional splice variants have also been reported but they have not been thoroughly characterized.

**Synonyms:** ERBB-3, c-erbB-3, HER-3

**Protein Families:** Adult stem cells, Druggable Genome, Protein Kinase, Secreted Protein, Stem cell - Pluripotency, Transmembrane

**Protein Pathways:** Calcium signaling pathway, Endocytosis, ErbB signaling pathway

### Product images:



Immunofluorescence staining of methanol-fixed MCF cells using Her3/ErbB3 Antibody