

## Product datasheet for **AP09509PU-N**

### TrkA (NTRK1) Rabbit Polyclonal Antibody

#### Product data:

Product Type:	Primary Antibodies
Applications:	IF
Recommended Dilution:	<b>Immunofluorescence:</b> 1/100-1/200.
Reactivity:	Human
Host:	Rabbit
Clonality:	Polyclonal
Immunogen:	KLH-Peptide sequence around aa.789~793 (P-V-Y-L-D) derived from Human TrkA.
Specificity:	This antibody detects endogenous levels of total TrkA protein.
Formulation:	PBS (without Mg <sup>2+</sup> and Ca <sup>2+</sup> ), pH 7.4, 150mM NaCl, 0.02% Sodium Azide and 50% Glycerol State: Aff - Purified State: Liquid purified Ig fraction
Concentration:	lot specific
Purification:	Affinity Chromatography
Conjugation:	Unconjugated
Storage:	Upon receipt, store undiluted (in aliquots) at -20°C. Avoid repeated freezing and thawing.
Stability:	Shelf life: one year from despatch.
Gene Name:	Homo sapiens neurotrophic tyrosine kinase, receptor, type 1 (NTRK1), transcript variant 3
Database Link:	<a href="#">Entrez Gene 4914 Human P04629</a>



[View online »](#)

**Background:**

The Trk proto-oncogene family contains four members, TrkA, TrkB, TrkC, and TrkE, which are variably expressed throughout the central and peripheral nervous systems. TrkA binds to nerve growth factor (NGF) and autophosphorylates on tyrosine residues (Tyr490, Tyr674, Tyr675, Tyr751 and Tyr785) to activate multiple downstream effector proteins. Phosphorylation at Tyr490 is required for Shc association and subsequent activation of the Ras-MAP kinase-signaling cascade, which leads to activation of Elk-1-dependent gene transcription and neurite growth. Phosphorylations at Tyr674 and Tyr675 lie within the catalytic domain of TrkA tyrosine kinase and reflect Trk kinase activity. Additionally, phosphorylation at Tyr751 is required for PI3-kinase association and activation of the Akt signaling cascade.

**Synonyms:**

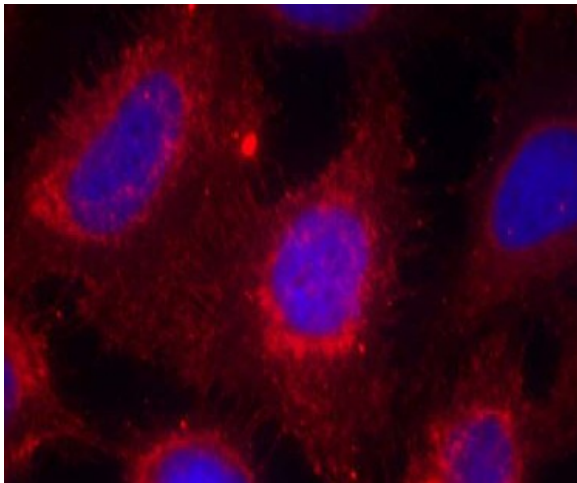
NTRK1, TRK, Trk-A

**Protein Families:**

Druggable Genome, Protein Kinase, Transmembrane

**Protein Pathways:**

Apoptosis, Endocytosis, MAPK signaling pathway, Neurotrophin signaling pathway, Pathways in cancer, Thyroid cancer

**Product images:**

Immunofluorescence staining of methanol-fixed HeLa cells using TrkA Antibody