

## Product datasheet for **AP09507PU-S**

### Synaptotagmin 1 (SYT1) Rabbit Polyclonal Antibody

#### Product data:

Product Type:	Primary Antibodies
Applications:	IF, WB
Recommended Dilution:	<b>Immunofluorescence:</b> 1/100 - 1/200. <b>Western Blot:</b> 1/500 - 1/1000.
Reactivity:	Human, Mouse, Rat
Host:	Rabbit
Clonality:	Polyclonal
Immunogen:	Synthesized non-phosphopeptide derived from human Synaptotagmin around the phosphorylation site of serine 309 (G-L-SP-D-P)
Specificity:	Synaptotagmin Antibody detects endogenous levels of total Synaptotagmin protein.
Formulation:	Phosphate buffered saline (without Mg <sup>2+</sup> and Ca <sup>2+</sup> ), pH 7.4, 150mM NaCl, 0.02% sodium azide and 50% glycerol State: Aff - Purified State: Liquid purified Ig fraction
Concentration:	lot specific
Purification:	Affinity chromatography
Conjugation:	Unconjugated
Storage:	Store the antibody at -20°C. Avoid repeated freezing and thawing.
Stability:	Shelf life: one year from despatch.
Gene Name:	synaptotagmin 1
Database Link:	<u><a href="#">Entrez Gene 20979 Mouse</a></u> <u><a href="#">Entrez Gene 25716 Rat</a></u> <u><a href="#">Entrez Gene 6857 Human P21579</a></u>



[View online »](#)

**Background:**

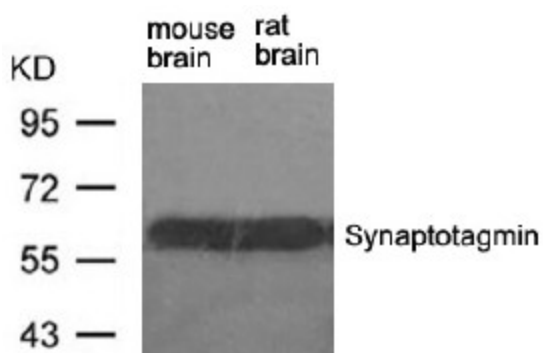
Synaptotagmin 1 is a 60kDa member of the synaptotagmin family, expressed in membranes of synaptic vesicles in rostral, phylogenetically younger brain regions and in some endocrine tissues.  $Ca^{2+}$  is bound by synaptotagmin whose C2 domains then bind phospholipids, trafficking vesicles to the synaptic membrane and exocytosis. This results in fast synchronous neurotransmitter release. Synaptotagmin also binds neurexins, syntaxin and AP2 independently of  $Ca^{2+}$  binding. Phosphorylation of synaptotagmin by protein kinases is thought to modulate its activity.

**Synonyms:**

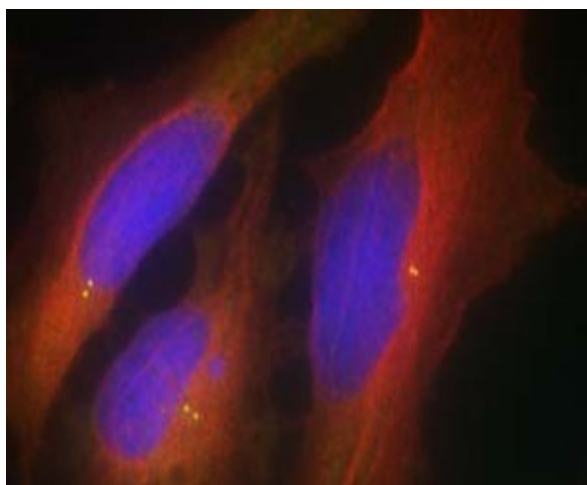
SYT1, SVP65, SYT, Synaptotagmin1, Synaptotagmin I, SytI, p65

**Protein Families:**

Secreted Protein, Transmembrane

**Product images:**

Western Blot analysis of extracts from mouse brain and rat brain tissue using Synaptotagmin antibody



Immunofluorescence staining of methanol-fixed HeLa cells using Synaptotagmin Antibody