

## Product datasheet for **AP09505PU-N**

### PPP1R14A (Isoform alpha) Rabbit Polyclonal Antibody

#### Product data:

Product Type:	Primary Antibodies
Applications:	IF
Recommended Dilution:	Immunofluorescence: 1/100 - 1/200.
Reactivity:	Human, Mouse, Rat
Host:	Rabbit
Clonality:	Polyclonal
Immunogen:	Synthesized non-phosphopeptide derived from human CPI17 $\alpha$ around the phosphorylation site of threonine 38 (R-V-TP-V-K)
Specificity:	CPI17 $\alpha$ antibody detects endogenous levels of total CPI17 $\alpha$ protein.
Formulation:	Phosphate buffered saline (without Mg <sup>2+</sup> and Ca <sup>2+</sup> ), pH 7.4, 150mM NaCl, 0.02% sodium azide and 50% glycerol State: Aff - Purified State: Liquid purified Ig
Concentration:	lot specific
Purification:	Affinity chromatography
Conjugation:	Unconjugated
Storage:	Store the antibody at -20°C. Avoid repeated freezing and thawing.
Stability:	Shelf life: one year from despatch.
Gene Name:	Homo sapiens protein phosphatase 1 regulatory inhibitor subunit 14A (PPP1R14A), transcript variant 1
Database Link:	<a href="#">Entrez Gene 68458 Mouse</a> <a href="#">Entrez Gene 114004 Rat</a> <a href="#">Entrez Gene 94274 Human Q96A00</a>
Background:	PKC potentiated inhibitor protein-17 is a 17kDa protein. Expressed in smooth muscles and neuronal cells, CP117 is a myosin phosphatase inhibitor protein. Phosphorylation of CP117 at Thr38 enhances its inhibitory effect by 100 fold. Once phosphorylated, CP117 inhibits PP1c and MLCP holoenzyme activity.
Synonyms:	Protein phosphatase 1 regulatory subunit 14A, CPI-17, CPI17, PPP1INL

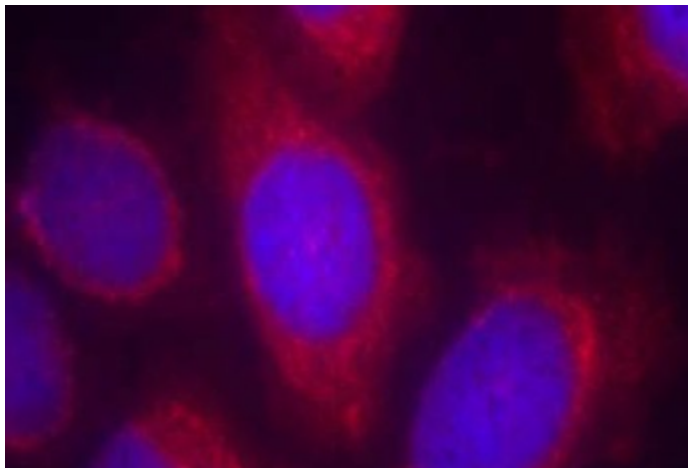


[View online »](#)

Protein Families: Druggable Genome

Protein Pathways: Vascular smooth muscle contraction

**Product images:**



Immunofluorescence staining of methanol-fixed HeLa cells using CPI17a antibody