

## Product datasheet for **AP09503PU-S**

### eNOS (NOS3) Rabbit Polyclonal Antibody

#### Product data:

Product Type:	Primary Antibodies
Applications:	IF
Recommended Dilution:	Immunofluorescence: 1/100 - 1/200.
Reactivity:	Mouse
Host:	Rabbit
Clonality:	Polyclonal
Immunogen:	Synthesized non-phosphopeptide derived from human eNOS around the phosphorylation site of threonine 495(K-K-TP-F-K)
Specificity:	eNOS Antibody detects endogenous levels of total eNOS protein.
Formulation:	Phosphate buffered saline (without Mg <sup>2+</sup> and Ca <sup>2+</sup> ), pH 7.4, 150mM NaCl, 0.02% sodium azide and 50% glycerol State: Aff - Purified State: Liquid purified Ig
Concentration:	lot specific
Purification:	Affinity chromatography
Conjugation:	Unconjugated
Storage:	Store the antibody at -20°C. Avoid repeated freezing and thawing.
Stability:	Shelf life: one year from despatch.
Gene Name:	nitric oxide synthase 3
Database Link:	<a href="#">Entrez Gene 18127 Mouse P29474</a>



[View online »](#)

**Background:**

Nitric oxide synthase NOS oxidizes a guanidine nitrogen of arginine releasing nitric oxide in the form of a free radical and citrulline. Nitric oxide thus generated acts as a messenger in diverse functions including vasodilation neurotransmission, anti tumor and anti pathogenic activities. NOS is classified under three types: neuronal NOS (nNOS) or brain NOS (bNOS); inducible NOS (iNOS) or macrophage NOS (mNOS); and endothelial NOS (eNOS). eNOS is a calcium/calmodulin dependent enzyme which undergoes several post translational modifications, including acylation with myristate and palmitate, and phosphorylation on numerous residues. As with the other members of the NOS family, eNOS derives the diffusible multifunctional second messenger NO from L arginine through a series of reactions in which L citrulline is an intermediate. eNOS plays an important role in controlling vascular tone, platelet aggregation, and cardiac myocyte function.

**Synonyms:**

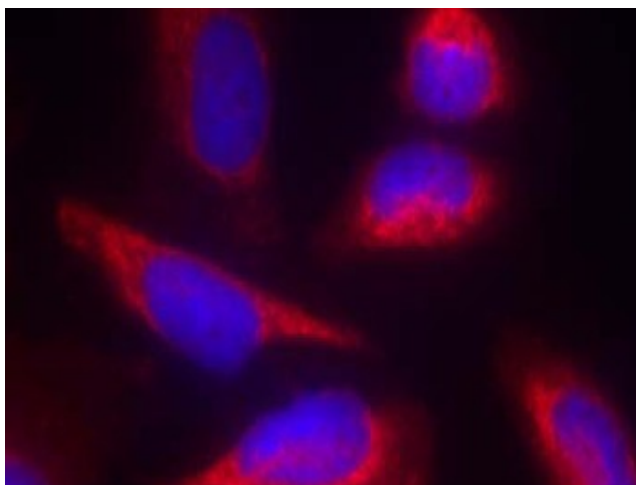
Endothelial NOS, EC-NOS, NOS type III, Constitutive NOS, eNOS

**Protein Families:**

Druggable Genome

**Protein Pathways:**

Alzheimer's disease, Amyotrophic lateral sclerosis (ALS), Arginine and proline metabolism, Calcium signaling pathway, Long-term depression, Metabolic pathways, Pathways in cancer, Small cell lung cancer, VEGF signaling pathway

**Product images:**


Immunofluorescence staining of methanol-fixed HeLa cells using eNOS Antibody