

Product datasheet for **AP09502PU-S**

NOS1 Rabbit Polyclonal Antibody

Product data:

Product Type:	Primary Antibodies
Applications:	IF, WB
Recommended Dilution:	Immunofluorescence: 1/100-1/200.
Reactivity:	Human, Mouse, Rat
Host:	Rabbit
Clonality:	Polyclonal
Immunogen:	Synthetic Peptide KLH conjugated corresponding to a sequence around amino acids 850-854 (F-N-SP-V-S) derived from Human nNOS.
Specificity:	This antibody detects endogenous levels of total nNOS protein.
Formulation:	PBS (without Mg ²⁺ and Ca ²⁺), pH 7.4, 150mM NaCl, 0.02% Sodium Azide and 50% Glycerol State: Aff - Purified State: Liquid purified Ig fraction
Concentration:	lot specific
Purification:	Affinity Chromatography using epitope-specific peptide
Conjugation:	Unconjugated
Storage:	Upon receipt, store undiluted (in aliquots) at -20°C. Avoid repeated freezing and thawing.
Stability:	Shelf life: one year from despatch.
Predicted Protein Size:	160 kDa
Gene Name:	nitric oxide synthase 1
Database Link:	Entrez Gene 18125 Mouse Entrez Gene 24598 Rat Entrez Gene 4842 Human P29475
Background:	NOS oxidizes a guanidine nitrogen of arginine releasing nitric oxide in the form of a free radical and citrulline. Nitric oxide thus generated acts as a messenger in diverse functions including vasodilation neurotransmission, anti-tumor and anti-pathogenic activities. NOS is classified under three types: neuronal NOS (nNOS) or brain NOS (bNOS); inducible NOS (iNOS) or macrophage NOS (mNOS); and endothelial NOS (eNOS).
Synonyms:	bNOS, nNOS, NOS type I, Neuronal NOS, Constitutive NOS, NC-NOS

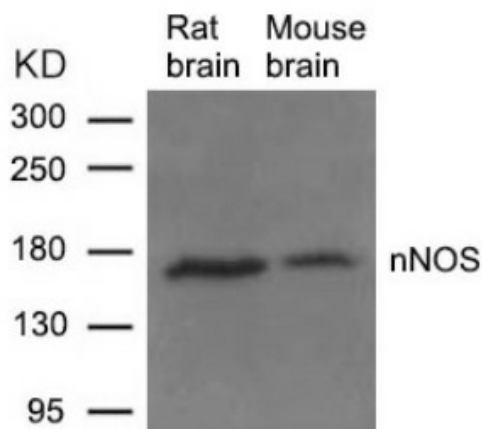


[View online »](#)

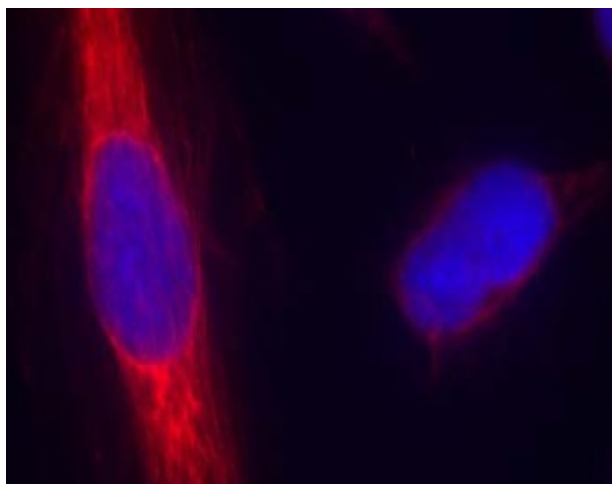
Protein Families: Druggable Genome

Protein Pathways: Alzheimer's disease, Amyotrophic lateral sclerosis (ALS), Arginine and proline metabolism, Calcium signaling pathway, Long-term depression, Metabolic pathways, Pathways in cancer, Small cell lung cancer

Product images:



Western blot analysis of extracts from Rat and Mouse brain tissue using NOS1 Antibody



Immunofluorescence staining of methanol-fixed HeLa cells using NOS1 Antibody