

## Product datasheet for **AP09497PU-S**

### c Rel (REL) Rabbit Polyclonal Antibody

#### Product data:

Product Type:	Primary Antibodies
Applications:	IF
Recommended Dilution:	Immunofluorescence: 1/100 - 1/200.
Reactivity:	Human
Host:	Rabbit
Clonality:	Polyclonal
Immunogen:	Synthesized non-phosphopeptide derived from human Rel around the phosphorylation site of serine 503 (T-S-SP-D-S)
Specificity:	Rel Antibody detects endogenous levels of total Rel protein.
Formulation:	Phosphate buffered saline (without Mg <sup>2+</sup> and Ca <sup>2+</sup> ), pH 7.4, 150mM NaCl, 0.02% sodium azide and 50% glycerol State: Aff - Purified State: Liquid purified Ig
Concentration:	lot specific
Purification:	Affinity chromatography
Conjugation:	Unconjugated
Storage:	Store the antibody at -20°C. Avoid repeated freezing and thawing.
Stability:	Shelf life: one year from despatch.
Gene Name:	REL proto-oncogene, NF-kB subunit
Database Link:	<a href="#">Entrez Gene 5966 Human Q04864</a>
Background:	c-Rel is the cellular cognate of v-Rel, the avian reticuloendotheliosis virus strain T transforming gene. V-Rel encodes a 59kDa phosphoprotein that is located in the cytoplasm of transformed spleen cells and in the nucleus of non-transformed fibroblasts, in contrast to the c-Rel protein which is cytoplasmic. C-Rel was shown to represent a constituent of the kB site binding transcription factor NFkB, which plays a crucial role in the expression of immunoglobulin k light chain gene.

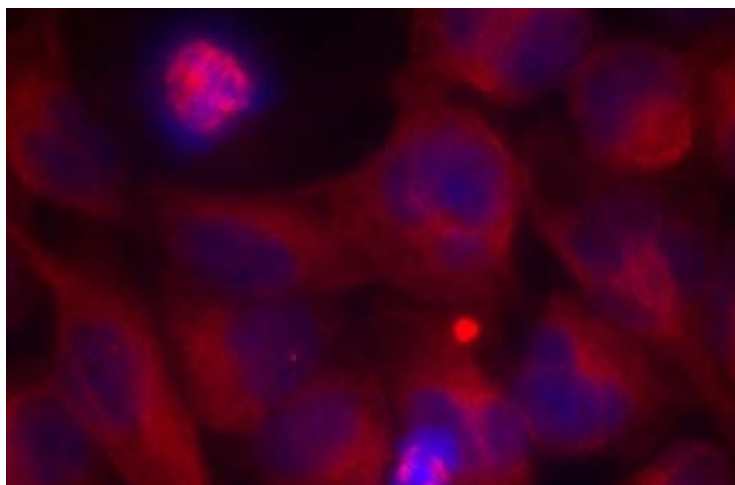


[View online »](#)

Synonyms: c-Rel

Protein Families: Druggable Genome, Transcription Factors

**Product images:**



Immunofluorescence staining of methanol-fixed HeLa cells using Rel Antibody