

Product datasheet for **AP09493PU-N**

Tyrosine Hydroxylase (TH) pSer40 Rabbit Polyclonal Antibody

Product data:

Product Type:	Primary Antibodies
Applications:	IF
Recommended Dilution:	Immunofluorescence: 1/100 - 1/200.
Reactivity:	Human, Mouse, Rat
Host:	Rabbit
Clonality:	Polyclonal
Immunogen:	Synthesized phosphopeptide derived from human Tyrosine Hydroxylase around the phosphorylation site of serine 40(R-Q-SP-L-I)
Specificity:	Tyrosine Hydroxylase (Phospho-Ser40) Antibody detects endogenous levels of Tyrosine Hydroxylase only when phosphorylated at serine 40.
Formulation:	Phosphate buffered saline (without Mg ²⁺ and Ca ²⁺), pH 7.4, 150mM NaCl, 0.02% sodium azide and 50% glycerol State: Aff - Purified State: Liquid purified IgG
Concentration:	lot specific
Purification:	Affinity chromatography
Conjugation:	Unconjugated
Storage:	Store the antibody at -20°C. Avoid repeated freezing and thawing.
Stability:	Shelf life: one year from despatch.
Gene Name:	tyrosine hydroxylase
Database Link:	Entrez Gene 21823 Mouse Entrez Gene 25085 Rat Entrez Gene 7054 Human P07101
Background:	Tyrosine hydroxylase is involved in the conversion of tyrosine to dopamine. As the rate-limiting enzyme in the synthesis of catecholamines, tyrosine hydroxylase has a key role in the physiology of adrenergic neurons. Tyrosine hydroxylase is regularly used as a marker for dopaminergic neurons, which is particularly relevant for research into Parkinson's disease
Synonyms:	Tyrosine 3-hydroxylase, TYH

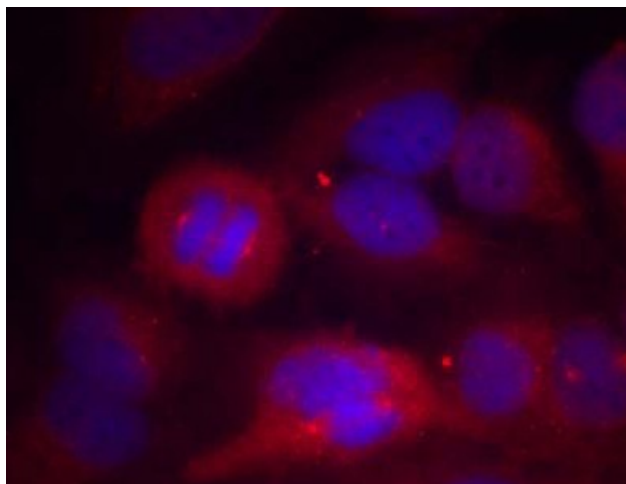


[View online »](#)

Protein Families: Druggable Genome

Protein Pathways: Metabolic pathways, Parkinson's disease, Tyrosine metabolism

Product images:



Immunofluorescence staining of methanol-fixed HeLa cells using Tyrosine Hydroxylase (Phospho-Ser40) Antibody