

Product datasheet for **AP09492PU-S**

SYT2 pThr202 Rabbit Polyclonal Antibody

Product data:

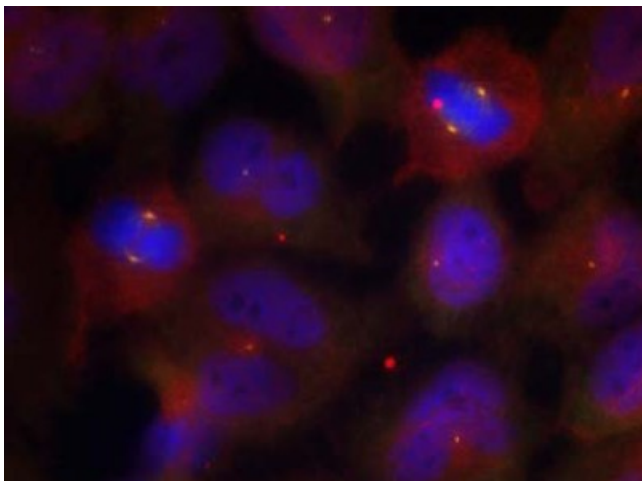
Product Type:	Primary Antibodies
Applications:	IF
Recommended Dilution:	Immunofluorescence: 1/100 - 1/200.
Reactivity:	Human, Mouse, Rat
Host:	Rabbit
Clonality:	Polyclonal
Immunogen:	Synthesized phosphopeptide derived from human Synaptotagmin II around the phosphorylation site of threonine 202 (R-K-TP-L-N)
Specificity:	Synaptotagmin II (Phospho-Thr202) Antibody detects endogenous levels of Synaptotagmin II only when phosphorylated at threonine202.
Formulation:	Phosphate buffered saline (without Mg ²⁺ and Ca ²⁺), pH 7.4, 150mM NaCl, 0.02% sodium azide and 50% glycerol State: Aff - Purified State: Liquid purified Ig
Concentration:	lot specific
Purification:	Affinity chromatography
Conjugation:	Unconjugated
Storage:	Store the antibody at -20°C. Avoid repeated freezing and thawing.
Stability:	Shelf life: one year from despatch.
Gene Name:	synaptotagmin 2
Database Link:	Entrez Gene 20980 Mouse Entrez Gene 24805 Rat Entrez Gene 127833 Human Q8N9I0
Background:	SYT2 (Synaptotagmin II) belongs to the synaptotagmin family of multi-domained, integral membrane proteins of synaptic vesicles which are thought to serve as Ca(2+) sensors in the process of vesicular trafficking and exocytosis. It binds acidic phospholipids with a specificity that requires the presence of both an acidic head group and a diacyl backbone.
Synonyms:	Synaptotagmin 2, SYT2, SYT-2, SYTII, Synaptotagmin II



[View online »](#)

Protein Families: Secreted Protein, Transmembrane

Product images:



Immunofluorescence staining of methanol-fixed HeLa cells using Synaptotagmin II (Phospho-Thr202) Antibody