

## Product datasheet for **AP09492PU-N**

### **SYT2 pThr202 Rabbit Polyclonal Antibody**

#### **Product data:**

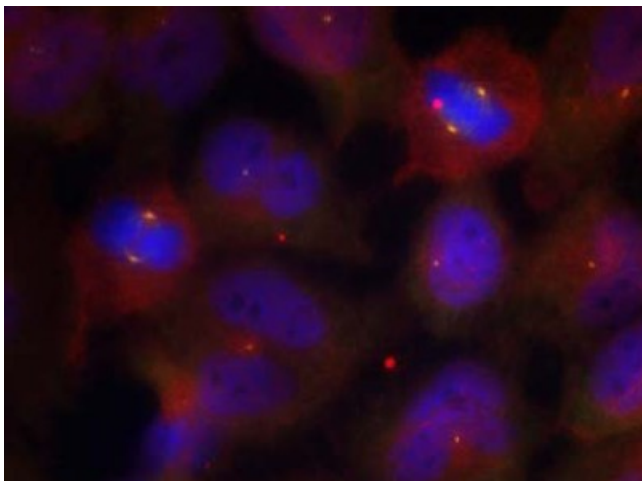
<b>Product Type:</b>	Primary Antibodies
<b>Applications:</b>	IF
<b>Recommended Dilution:</b>	Immunofluorescence: 1/100 - 1/200.
<b>Reactivity:</b>	Human, Mouse, Rat
<b>Host:</b>	Rabbit
<b>Clonality:</b>	Polyclonal
<b>Immunogen:</b>	Synthesized phosphopeptide derived from human Synaptotagmin II around the phosphorylation site of threonine 202 (R-K-TP-L-N)
<b>Specificity:</b>	Synaptotagmin II (Phospho-Thr202) Antibody detects endogenous levels of Synaptotagmin II only when phosphorylated at threonine202.
<b>Formulation:</b>	Phosphate buffered saline (without Mg <sup>2+</sup> and Ca <sup>2+</sup> ), pH 7.4, 150mM NaCl, 0.02% sodium azide and 50% glycerol State: Aff - Purified State: Liquid purified Ig
<b>Concentration:</b>	lot specific
<b>Purification:</b>	Affinity chromatography
<b>Conjugation:</b>	Unconjugated
<b>Storage:</b>	Store the antibody at -20°C. Avoid repeated freezing and thawing.
<b>Stability:</b>	Shelf life: one year from despatch.
<b>Gene Name:</b>	synaptotagmin 2
<b>Database Link:</b>	<a href="#">Entrez Gene 20980 Mouse</a> <a href="#">Entrez Gene 24805 Rat</a> <a href="#">Entrez Gene 127833 Human Q8N9I0</a>
<b>Background:</b>	SYT2 (Synaptotagmin II) belongs to the synaptotagmin family of multi-domained, integral membrane proteins of synaptic vesicles which are thought to serve as Ca <sup>2+</sup> sensors in the process of vesicular trafficking and exocytosis. It binds acidic phospholipids with a specificity that requires the presence of both an acidic head group and a diacyl backbone.
<b>Synonyms:</b>	Synaptotagmin 2, SYT2, SYT-2, SYTII, Synaptotagmin II



[View online »](#)

Protein Families: Secreted Protein, Transmembrane

**Product images:**



Immunofluorescence staining of methanol-fixed HeLa cells using Synaptotagmin II (Phospho-Thr202) Antibody