

Product datasheet for **AP09491PU-N**

Synaptotagmin 1 (SYT1) pSer309 Rabbit Polyclonal Antibody

Product data:

Product Type:	Primary Antibodies
Applications:	IF
Recommended Dilution:	Immunofluorescence: 1/100-1/200.
Reactivity:	Human, Mouse, Rat
Host:	Rabbit
Clonality:	Polyclonal
Immunogen:	Peptide sequence around phosphorylation site of Serine 309 (G-L-S(p)-D-P) derived from Human.
Specificity:	The antibody detects endogenous level of Synaptotagmin only when phosphorylated at Serine 309.
Formulation:	Phosphate Buffered Saline (without Mg ²⁺ and Ca ²⁺), pH 7.4, 150mM NaCl State: Aff - Purified State: Liquid purified IgG fraction Stabilizer: 50% Glycerol Preservative: 0.02% Sodium Azide
Concentration:	lot specific
Purification:	Affinity Chromatography using epitope-specific phosphopeptide. Non-phospho specific antibodies were removed by chromatography using non-phosphopeptide.
Conjugation:	Unconjugated
Storage:	Store undiluted at 2-8°C for one month or (in aliquots) at -20°C for longer. Avoid repeated freezing and thawing.
Stability:	Shelf life: one year from despatch.
Predicted Protein Size:	~46 kDa
Gene Name:	synaptotagmin 1
Database Link:	Entrez Gene 20979 Mouse Entrez Gene 25716 Rat Entrez Gene 6857 Human P21579



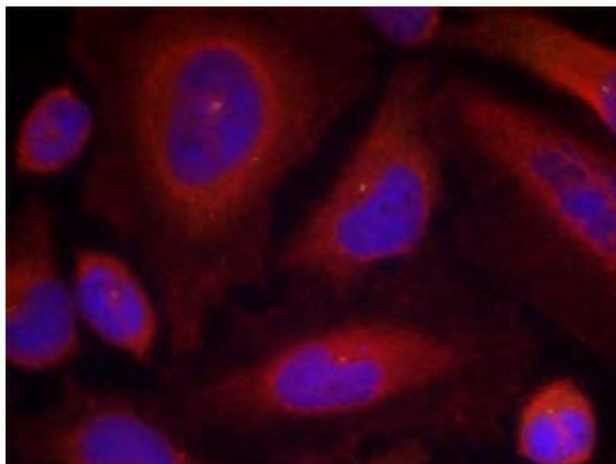
[View online »](#)

Background: The synaptotagmins are integral membrane proteins of synaptic vesicles thought to serve as Ca(2+) sensors in the process of vesicular trafficking and exocytosis. Calcium binding to synaptotagmin I participates in triggering neurotransmitter release at the synapse.

Synonyms: SYT1, SVP65, SYT, Synaptotagmin1, Synaptotagmin I, SytI, p65

Protein Families: Secreted Protein, Transmembrane

Product images:



Immunofluorescence staining of methanol-fixed HeLa cells using Synaptotagmin Antibody (Phospho-Ser309)