

## Product datasheet for **AP09486PU-S**

### Paxillin (PXN) pTyr88 Rabbit Polyclonal Antibody

#### Product data:

Product Type:	Primary Antibodies
Applications:	IF, WB
Recommended Dilution:	<b>Immunofluorescence:</b> 1/100 - 1/200. <b>Western Blot:</b> 1/500 - 1/1000; Incubate membrane with diluted antibody in 5% nonfat milk, 1X TBS, 0,1% Tween-20 at 4°C with gentle shaking, overnight.
Reactivity:	Human
Host:	Rabbit
Clonality:	Polyclonal
Immunogen:	Synthetic phosphopeptide derived from human Paxillin around the phosphorylation site of Tyrosine 88 (P-V-Yp-G-S).
Specificity:	Paxillin Antibody (AP09486PU) detects endogenous levels of Paxillin only when phosphorylated at Tyrosine 88.
Formulation:	PBS (without Mg <sup>2+</sup> and Ca <sup>2+</sup> ), pH 7.4, 150 mM NaCl, 0.02% Sodium Azide and 50% Glycerol. State: Aff - Purified State: Liquid purified Ig fraction.
Concentration:	lot specific
Purification:	Immunoaffinity Chromatography
Conjugation:	Unconjugated
Storage:	Store the antibody (in aliquots) at -20°C. Avoid repeated freezing and thawing.
Stability:	Shelf life: One year from despatch.
Gene Name:	paxillin
Database Link:	<a href="#">Entrez Gene 5829 Human P49023</a>



[View online »](#)

**Background:**

Paxillin is a 64 kDa cytoskeletal adapter protein involved in organisation and function of focal adhesions, which are critical to cell adhesion and migration. This in turn plays a role in a wide variety of processes including embryogenesis, organogenesis, wound repair, inflammation and cancer. Paxillin contains LD motifs, LIM domains, SH3 and SH2 binding domains that serve as docking sites for cytoskeletal proteins, tyrosine kinases (e.g., FAK, Pyk 2, Src), serine/threonine kinases, GTPase activating proteins and other adaptor proteins (e.g., Actin, Vinculin, Crk).

**Synonyms:**

FLJ16691

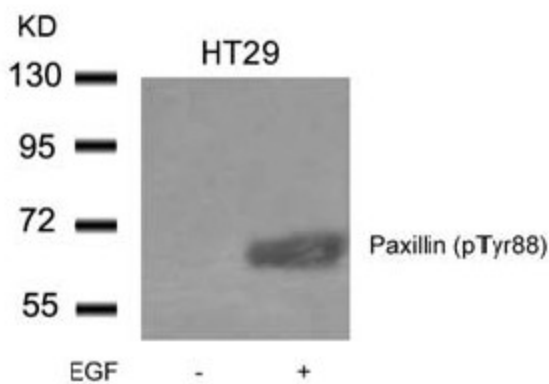
**Protein Families:**

Druggable Genome, Stem cell - Pluripotency

**Protein Pathways:**

Chemokine signaling pathway, Focal adhesion, Leukocyte transendothelial migration, Regulation of actin cytoskeleton, VEGF signaling pathway

**Product images:**



Western Blot analysis of extracts from HT29 cells untreated or treated with EGF using Paxillin (pTyr88) antibody

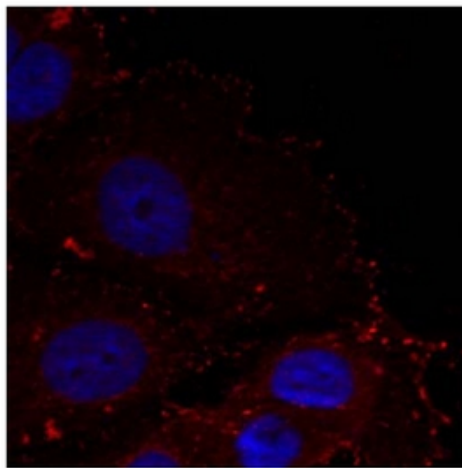


Figure 1. Immunofluorescence staining of methanol-fixed HeLa cells using Paxillin pTyr88 Antibody (Red).