

Product datasheet for **AP09485PU-N**

Phospholipase C gamma 1 (PLCG1) pTyr771 Rabbit Polyclonal Antibody

Product data:

Product Type:	Primary Antibodies
Applications:	IF, WB
Recommended Dilution:	Immunofluorescence: 1/100 - 1/200. Western Blot: 1/500 - 1/1000.
Reactivity:	Human, Mouse, Rat
Host:	Rabbit
Clonality:	Polyclonal
Immunogen:	Synthetic phosphopeptide derived from human PLCG1 around the phosphorylation site of Tyrosine 771 (P-D-Yp-G-A).
Specificity:	Antibody AP09485PU detects endogenous levels of PLC-gamma-1 only when phosphorylated at Tyrosine 771.
Formulation:	PBS (without Mg ²⁺ and Ca ²⁺), pH 7.4, 150 mM NaCl, 0.02% Sodium Azide and 50% Glycerol. State: Aff - Purified State: Liquid purified Ig fraction
Concentration:	lot specific
Purification:	Immunoaffinity Chromatography
Conjugation:	Unconjugated
Storage:	Store the antibody (in aliquots) at -20°C. Avoid repeated freezing and thawing.
Stability:	Shelf life: One year from despatch.
Gene Name:	phospholipase C gamma 1
Database Link:	Entrez Gene 18803 Mouse Entrez Gene 25738 Rat Entrez Gene 5335 Human P19174



[View online »](#)

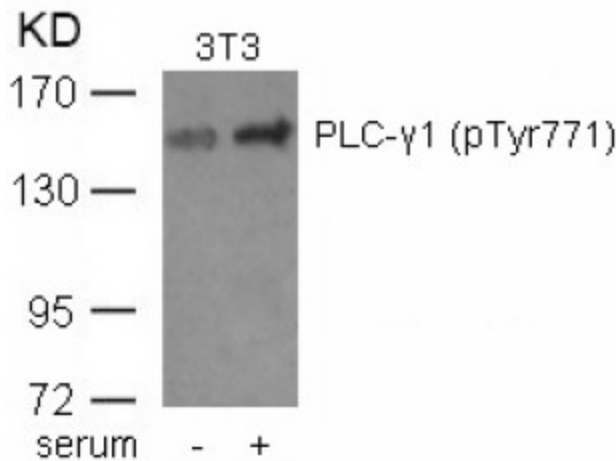
Background: Phospholipase C gamma 1 is a tyrosine kinase substrate for many receptor and nonreceptor tyrosine kinases. Activation of the enzyme produces two second messenger molecules, inositol 1,4,5-trisphosphate and diacylglycerol, which provoke the mobilization of intracellular Ca²⁺ and activation of protein kinase C. Although the mammalian genome encodes 10 known phosphoinositide specific PLCs, only the gamma 1 and gamma 2 isoforms are regulated by tyrosine kinase activity. PLC beta isoform activity is controlled by heterotrimeric G protein coupled receptors, while the mechanism of regulation of PLCgamma activity is unknown.

Synonyms: PLC1, Phospholipase C-gamma-1, PLC-gamma-1, PLC gamma1 Phospholipase C-II, PLC-II, PLC-148

Protein Families: Druggable Genome

Protein Pathways: Calcium signaling pathway, Epithelial cell signaling in Helicobacter pylori infection, ErbB signaling pathway, Fc epsilon RI signaling pathway, Fc gamma R-mediated phagocytosis, Glioma, Inositol phosphate metabolism, Leukocyte transendothelial migration, Metabolic pathways, Natural killer cell mediated cytotoxicity, Neurotrophin signaling pathway, Non-small cell lung cancer, Pathways in cancer, Phosphatidylinositol signaling system, T cell receptor signaling pathway, VEGF signaling pathway, Vibrio cholerae infection

Product images:



Western Blot analysis of extracts from 3T3 cells untreated or treated with serum using PLC-gamma1 (pTyr771) antibody

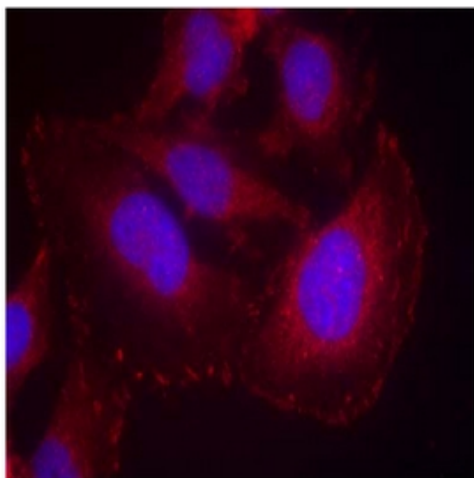


Figure 1. Immunofluorescence staining of methanol-fixed HeLa cells using PLCG1 pTyr771 Antibody (Red).