

Product datasheet for **AP09483PU-N**

Cofilin 1 (CFL1) pTyr140 Rabbit Polyclonal Antibody

Product data:

Product Type:	Primary Antibodies
Applications:	IHC
Recommended Dilution:	Immunohistochemistry on Paraffin Sections: 1/50~1/100.
Reactivity:	Human, Mouse, Rat
Host:	Rabbit
Clonality:	Polyclonal
Immunogen:	The antiserum was produced against synthesized phosphopeptide derived from human cofilin1 around the phosphorylation site of Tyrosine 139 (N-C-Yp-E-E).
Specificity:	Antibody AP09483PU detects endogenous levels of Cofilin-1 only when phosphorylated at Tyrosine 139.
Formulation:	PBS (without Mg ²⁺ and Ca ²⁺), pH 7.4, 150 mM NaCl, 0.02% Sodium Azide and 50% Glycerol. State: Aff - Purified State: Liquid purified Ig fraction.
Concentration:	lot specific
Purification:	Immunoaffinity Chromatography using epitope-specific phosphopeptide. The antibody against non-phosphopeptide was removed by chromatography using non-phosphopeptide corresponding to the phosphorylation site.
Conjugation:	Unconjugated
Storage:	Store the antibody (in aliquots) at -20°C. Avoid repeated freezing and thawing.
Stability:	Shelf life: One year from despatch.
Gene Name:	cofilin 1
Database Link:	Entrez Gene 12631 Mouse Entrez Gene 29271 Rat Entrez Gene 1072 Human P23528



[View online »](#)

Background:

Cofilin is a small phosphoinositide sensitive, actin binding protein capable of depolymerizing actin filaments in vitro. Under certain conditions, it fragments the filaments and accelerates actin subunit dissociation from their 'pointed' (minus) ends. Cofilin binds stoichiometrically to monomeric G-actin and to actin protomers in filaments in an apparent pH-dependent, Ca²⁺-independent manner. Cofilin intercalates between longitudinally associated actin monomers within the filament and distorts its helical twist. Cofilin is ubiquitous in tissues of eukaryotes and is especially abundant in neuronal tissues. It is essential for viability and is important for many cellular processes involving actin remodeling such as motility at the leading edge of cells, polarized cell growth, endocytosis, phagocytosis, cellular activation, cytokinesis, and pathogen intracellular motility.

Synonyms:

CFL1, CFL, p18

Protein Families:

Druggable Genome

Protein Pathways:

Axon guidance, Fc gamma R-mediated phagocytosis, Regulation of actin cytoskeleton

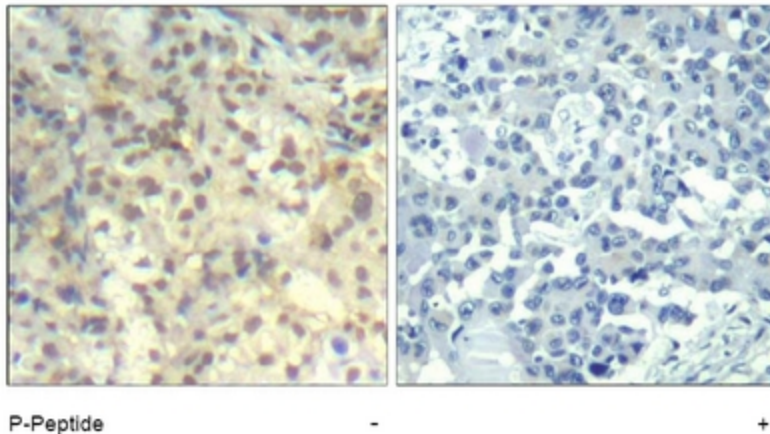
Product images:

Figure 1. Immunohistochemical analysis of paraffin-embedded human lung carcinoma tissue using Cofilin1 pTyr139 Antibody.