

Product datasheet for **AP09478PU-S**

alpha Synuclein (SNCA) pTyr136 Rabbit Polyclonal Antibody

Product data:

Product Type:	Primary Antibodies
Applications:	IF, WB
Recommended Dilution:	Western Blot: 1/500~1/1000. Immunofluorescence: 1/100~1/200.
Reactivity:	Human, Mouse, Rat
Host:	Rabbit
Clonality:	Polyclonal
Immunogen:	Peptide Sequence around the phosphorylation site of Tyr136 (Q-D- Ψ -E-P) derived from Human Alpha-Synuclein
Specificity:	This antibody detects endogenous levels of Alpha-Synuclein only when phosphorylated at Tyrosine 136.
Formulation:	PBS (without Mg ²⁺ and Ca ²⁺), pH 7.4, 150 mM NaCl, 0.02% Sodium Azide and 50% Glycerol. State: Aff - Purified State: Liquid purified Ig fraction.
Concentration:	lot specific
Purification:	Immunoaffinity Chromatography using epitope-specific phosphopeptide. The antibody against non-phosphopeptide was removed by chromatography using non-phosphopeptide corresponding to the phosphorylation site.
Conjugation:	Unconjugated
Storage:	Store the antibody (in aliquots) at -20°C. Avoid repeated freezing and thawing.
Stability:	Shelf life: One year from despatch.
Gene Name:	synuclein alpha
Database Link:	Entrez Gene 20617 Mouse Entrez Gene 29219 Rat Entrez Gene 6622 Human P37840



[View online »](#)

Background:

Alpha Synuclein is implicated in the regulation of dopamine release and transport. It is a soluble protein, expressed principally in the brain but also expressed in low concentrations in all tissues examined (except liver). In the nervous system, alpha Synuclein is primarily located at presynaptic terminals and is found membrane bound in dopaminergic neurons. It can form filamentous aggregates that are the major non amyloid component of intracellular inclusions in several neurodegenerative diseases (synucleinopathies), including Parkinson's Disease. Alpha Synuclein induces fibrillization of microtubule associated protein tau and reduces neuronal responsiveness to various apoptotic stimuli, leading to a decreased caspase 3 activation. Alpha synuclein is a protein phosphorylated predominantly on serine residues.

Synonyms:

NACP, PARK1

Note:

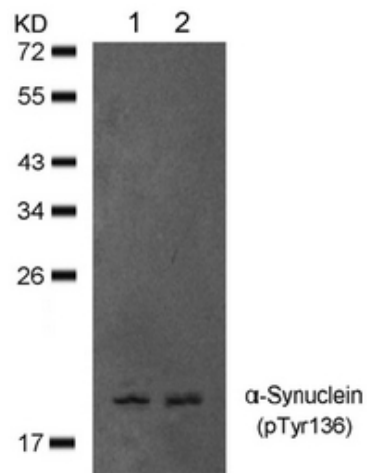
Molecular Weight: 18 kDa

Protein Families:

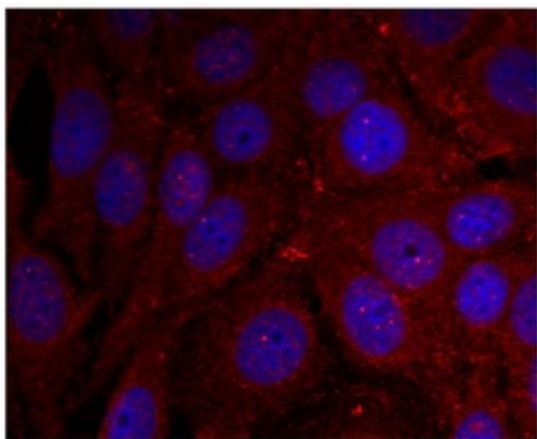
Druggable Genome

Protein Pathways:

Alzheimer's disease, Parkinson's disease

Product images:

Western blot analysis of extracts from Rat brain tissue (Lane 1) and Mouse brain tissue (Lane 2) using alpha-Synuclein antibody (pTyr136).



Immunofluorescence staining of methanol-fixed HeLa cells using alpha-Synuclein antibody (pTyr136).