

## Product datasheet for **AP09476PU-S**

### **GAP43 pSer41 Rabbit Polyclonal Antibody**

#### **Product data:**

<b>Product Type:</b>	Primary Antibodies
<b>Applications:</b>	IF
<b>Recommended Dilution:</b>	Immunofluorescence: 1/100~1/200.
<b>Reactivity:</b>	Human, Mouse, Rat
<b>Host:</b>	Rabbit
<b>Clonality:</b>	Polyclonal
<b>Immunogen:</b>	The antiserum was produced against synthesized phosphopeptide derived from human GAP43 around the phosphorylation site of Ser41 (Q-A-Sp-F-R).
<b>Specificity:</b>	Antibody AP09476PU detects endogenous levels of GAP43 only when phosphorylated at Ser41.
<b>Formulation:</b>	PBS (without Mg <sup>2+</sup> and Ca <sup>2+</sup> ), pH 7.4, 150 mM NaCl, 0.02% Sodium Azide and 50% Glycerol. State: Aff - Purified State: Liquid purified Ig fraction.
<b>Concentration:</b>	lot specific
<b>Purification:</b>	Immunoaffinity Chromatography using epitope-specific phosphopeptide. The antibody against non-phosphopeptide was removed by chromatography using non-phosphopeptide corresponding to the phosphorylation site.
<b>Conjugation:</b>	Unconjugated
<b>Storage:</b>	Store the antibody (in aliquots) at -20°C. Avoid repeated freezing and thawing.
<b>Stability:</b>	Shelf life: One year from despatch.
<b>Gene Name:</b>	growth associated protein 43
<b>Database Link:</b>	<a href="#">Entrez Gene 14432 Mouse</a> <a href="#">Entrez Gene 29423 Rat</a> <a href="#">Entrez Gene 2596 Human P17677</a>
<b>Background:</b>	GAP43 is expressed by developing and regenerating neurons, and to a lesser extent, reactive glial cells. It is used widely to specifically label injured neurons and to score neuronal regeneration. GAP43 is also a neuronal growth cone protein thought to be involved in pathfinding.



[View online »](#)

Synonyms: Neuromodulin

**Product images:**

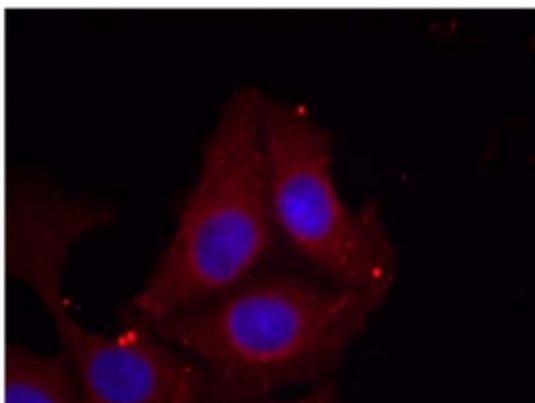


Figure 1. Immunofluorescence staining of methanol-fixed HeLa cells using GAP43 (Phospho-Ser41) Antibody (Red).