

Product datasheet for **AP09476PU-N**

GAP43 pSer41 Rabbit Polyclonal Antibody

Product data:

Product Type:	Primary Antibodies
Applications:	IF
Recommended Dilution:	Immunofluorescence: 1/100~1/200.
Reactivity:	Human, Mouse, Rat
Host:	Rabbit
Clonality:	Polyclonal
Immunogen:	The antiserum was produced against synthesized phosphopeptide derived from human GAP43 around the phosphorylation site of Ser41 (Q-A-Sp-F-R).
Specificity:	Antibody AP09476PU detects endogenous levels of GAP43 only when phosphorylated at Ser41.
Formulation:	PBS (without Mg ²⁺ and Ca ²⁺), pH 7.4, 150 mM NaCl, 0.02% Sodium Azide and 50% Glycerol. State: Aff - Purified State: Liquid purified Ig fraction.
Concentration:	lot specific
Purification:	Immunoaffinity Chromatography using epitope-specific phosphopeptide. The antibody against non-phosphopeptide was removed by chromatography using non-phosphopeptide corresponding to the phosphorylation site.
Conjugation:	Unconjugated
Storage:	Store the antibody (in aliquots) at -20°C. Avoid repeated freezing and thawing.
Stability:	Shelf life: One year from despatch.
Gene Name:	growth associated protein 43
Database Link:	<u>Entrez Gene 14432 Mouse</u> <u>Entrez Gene 29423 Rat</u> <u>Entrez Gene 2596 Human</u> <u>P17677</u>
Background:	GAP43 is expressed by developing and regenerating neurons, and to a lesser extent, reactive glial cells. It is used widely to specifically label injured neurons and to score neuronal regeneration. GAP43 is also a neuronal growth cone protein thought to be involved in pathfinding.



[View online »](#)

Synonyms: Neuromodulin

Product images:

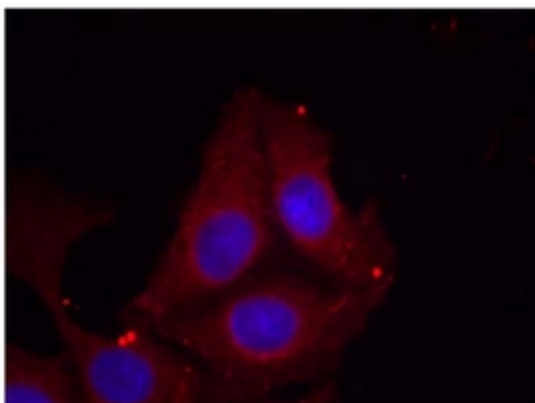


Figure 1. Immunofluorescence staining of methanol-fixed HeLa cells using GAP43 (Phospho-Ser41) Antibody (Red).