

## Product datasheet for **AP09474PU-S**

### EIF4B Rabbit Polyclonal Antibody

#### Product data:

Product Type:	Primary Antibodies
Applications:	IHC, WB
Recommended Dilution:	Western Blot: 1/500-1/1000. Incubate membrane with diluted antibody in 5% nonfat milk, 1X TBS, 0.1% Tween-20 at 4°C with gentle shaking, overnight. Immunohistochemistry on Paraffin Sections: 1/50~1/100.
Reactivity:	Human
Host:	Rabbit
Clonality:	Polyclonal
Immunogen:	Peptide sequence around amino acids 420~424 (T-G-S-E-S) derived from Human eIF4B.
Specificity:	This antibody detects endogenous levels of total eIF4B protein.
Formulation:	PBS (without Mg <sup>2+</sup> and Ca <sup>2+</sup> ), pH 7.4, 150 mM NaCl, 0.02% Sodium Azide and 50% Glycerol. State: Aff - Purified State: Liquid purified Ig fraction.
Concentration:	lot specific
Purification:	Immunoaffinity Chromatography using epitope-specific peptide.
Conjugation:	Unconjugated
Storage:	Store the antibody (in aliquots) at -20°C. Avoid repeated freezing and thawing.
Stability:	Shelf life: One year from despatch.
Gene Name:	eukaryotic translation initiation factor 4B
Database Link:	<a href="#">Entrez Gene 1975 Human P23588</a>
Background:	eIF4B is required for the binding of mRNA to ribosomes. It functions in close association with eIF4F and eIF4A. It binds near the 5'-terminal cap of mRNA in the presence of eIF4F and ATP. It promotes the ATPase activity and the ATP-dependent RNA unwinding activity of both eIF4A and eIF4F (referenced from swissprot).
Synonyms:	Eukaryotic translation initiation factor 4B, eIF-4B



[View online »](#)

Note: Molecular Weight: 80 kDa

Protein Pathways: mTOR signaling pathway

### Product images:

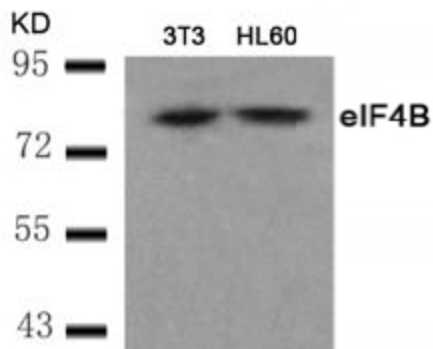


Figure 2. Western blot analysis of extract from 3T3 and HL60 cells using eIF4B Antibody.

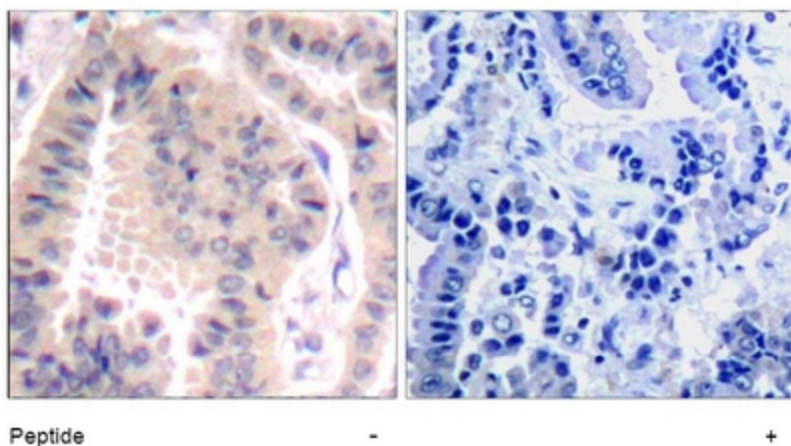


Figure 1. Immunohistochemical analysis of paraffin-embedded human lung carcinoma tissue using eIF4B Antibody (Left) or the same antibody preincubated with blocking peptide (Right).