

## Product datasheet for **AP09474PU-N**

### EIF4B Rabbit Polyclonal Antibody

#### Product data:

|                       |   |
|-----------------------|---|
| Product Type:         | Primary Antibodies  |
| Applications:         | IHC, WB   |
| Recommended Dilution: | Western Blot: 1/500-1/1000.<br>Incubate membrane with diluted antibody in 5% nonfat milk, 1X TBS, 0.1% Tween-20 at 4°C with gentle shaking, overnight.<br>Immunohistochemistry on Paraffin Sections: 1/50~1/100.  |
| Reactivity:           | Human   |
| Host:                 | Rabbit  |
| Clonality:            | Polyclonal  |
| Immunogen:            | Peptide sequence around amino acids 420~424 (T-G-S-E-S) derived from Human eIF4B.   |
| Specificity:          | This antibody detects endogenous levels of total eIF4B protein.   |
| Formulation:          | PBS (without Mg <sup>2+</sup> and Ca <sup>2+</sup> ), pH 7.4, 150 mM NaCl, 0.02% Sodium Azide and 50% Glycerol.<br>State: Aff - Purified<br>State: Liquid purified Ig fraction.   |
| Concentration:        | lot specific  |
| Purification:         | Immunoaffinity Chromatography using epitope-specific peptide.   |
| Conjugation:          | Unconjugated  |
| Storage:              | Store the antibody (in aliquots) at -20°C.<br>Avoid repeated freezing and thawing.  |
| Stability:            | Shelf life: One year from despatch.   |
| Gene Name:            | eukaryotic translation initiation factor 4B   |
| Database Link:        | <a href="#">Entrez Gene 1975 Human P23588</a>   |
| Background:           | eIF4B is required for the binding of mRNA to ribosomes. It functions in close association with eIF4F and eIF4A. It binds near the 5'-terminal cap of mRNA in the presence of eIF4F and ATP. It promotes the ATPase activity and the ATP-dependent RNA unwinding activity of both eIF4A and eIF4F (referenced from swissprot). |
| Synonyms:             | Eukaryotic translation initiation factor 4B, eIF-4B   |



[View online »](#)

Note: Molecular Weight: 80 kDa

Protein Pathways: mTOR signaling pathway

### Product images:

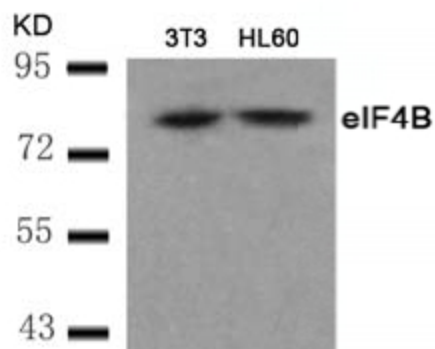


Figure 2. Western blot analysis of extract from 3T3 and HL60 cells using eIF4B Antibody.

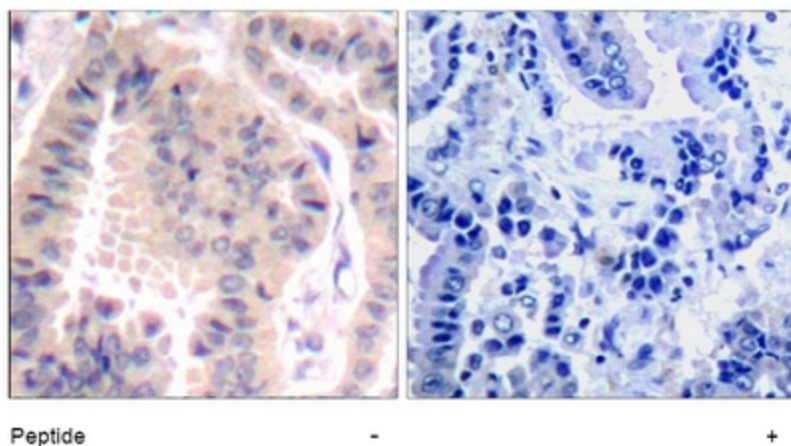


Figure 1. Immunohistochemical analysis of paraffin-embedded human lung carcinoma tissue using eIF4B Antibody (Left) or the same antibody preincubated with blocking peptide (Right).