

## Product datasheet for **AP09472PU-N**

### EIF4B pSer422 Rabbit Polyclonal Antibody

#### Product data:

Product Type:	Primary Antibodies
Applications:	IHC, WB
Recommended Dilution:	<b>Western Blot:</b> 1/500-1/1000. Incubate membrane with diluted antibody in 5% nonfat milk, 1xTBS, 0.1% Tween-20 at 4°C with gentle shaking, overnight. <b>Immunohistochemistry on Paraffin Sections:</b> 1/50-1/100.
Reactivity:	Human, Mouse
Host:	Rabbit
Clonality:	Polyclonal
Immunogen:	Synthetic phosphopeptide derived from Human eIF4B around the phosphorylation site of Serine 422 (T-G-Sp-E-S).
Specificity:	This antibody detects endogenous levels of eIF4B only when phosphorylated at Serine 422.
Formulation:	PBS (without Mg <sup>2+</sup> and Ca <sup>2+</sup> ), pH 7.4, 150 mM NaCl, 0.02% Sodium Azide and 50% Glycerol. State: Aff - Purified State: Liquid purified Ig fraction.
Concentration:	lot specific
Purification:	Immunoaffinity Chromatography using epitope-specific phosphopeptide. The antibody against non-phosphopeptide was removed by chromatography using non-phosphopeptide corresponding to the phosphorylation site.
Conjugation:	Unconjugated
Storage:	Store the antibody (in aliquots) at -20°C. Avoid repeated freezing and thawing.
Stability:	Shelf life: One year from despatch.
Gene Name:	eukaryotic translation initiation factor 4B
Database Link:	<a href="#">Entrez Gene 75705 Mouse</a> <a href="#">Entrez Gene 1975 Human</a> <a href="#">P23588</a>



[View online »](#)

**Background:** eIF4B is required for the binding of mRNA to ribosomes. It functions in close association with eIF4F and eIF4A. It binds near the 5'-terminal cap of mRNA in the presence of eIF4F and ATP. It promotes the ATPase activity and the ATP-dependent RNA unwinding activity of both eIF4A and eIF4F (referenced from swissprot).

**Synonyms:** Eukaryotic translation initiation factor 4B, eIF-4B

**Note:** Molecular Weight: 80 kDa

**Protein Pathways:** mTOR signaling pathway

**Product images:**

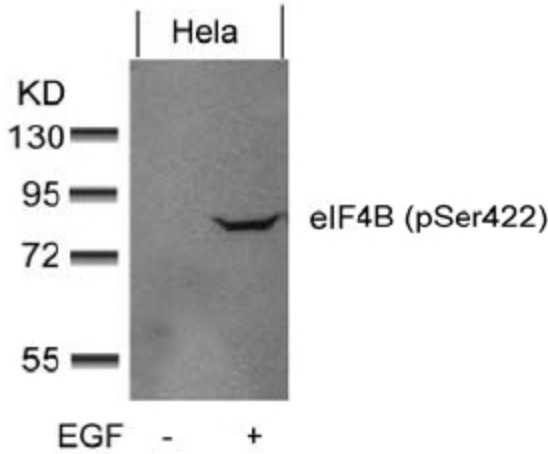


Figure 2. Western blot analysis of extracts from HeLa cells untreated or treated with EGF using eIF4B pSer422 Antibody.

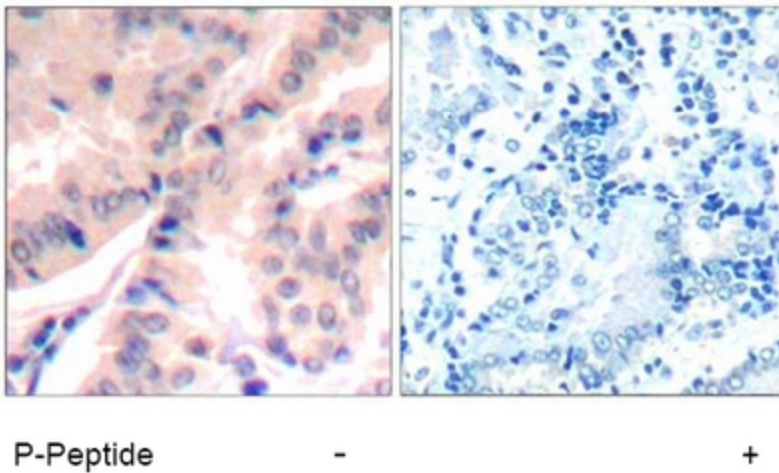


Figure 1. Immunohistochemical analysis of paraffin-embedded human lung carcinoma tissue using eIF4B pSer422 antibody (Left) and the same antibody preincubated with blocking peptide (Right).