

## Product datasheet for **AP09467PU-S**

### alpha 1 Catenin (CTNNA1) pSer641 Rabbit Polyclonal Antibody

#### Product data:

Product Type:	Primary Antibodies
Applications:	WB
Recommended Dilution:	Western Blot: 1/500~1/1000.
Reactivity:	Human, Mouse
Host:	Rabbit
Clonality:	Polyclonal
Immunogen:	Peptide sequence around the phosphorylation site of Serine 641 (D-D- <del>S</del> -D-F) derived from Human Alpha-Catenin.
Specificity:	This antibody detects endogenous levels of Alpha-Catenin only when phosphorylated at Serine 641.
Formulation:	PBS (without Mg <sup>2+</sup> and Ca <sup>2+</sup> ), pH 7.4, 150 mM NaCl, 0.02% Sodium Azide and 50% Glycerol. State: Aff - Purified State: Liquid purified Ig fraction.
Concentration:	lot specific
Purification:	Immunoaffinity Chromatography using epitope-specific phosphopeptide. The antibody against non-phosphopeptide was removed by chromatography using non-phosphopeptide corresponding to the phosphorylation site.
Conjugation:	Unconjugated
Storage:	Store the antibody (in aliquots) at -20°C. Avoid repeated freezing and thawing.
Stability:	Shelf life: One year from despatch.
Gene Name:	catenin alpha 1
Database Link:	<a href="#">Entrez Gene 12385 Mouse</a> <a href="#">Entrez Gene 1495 Human</a> <a href="#">P35221</a>



[View online »](#)

**Background:**

The distinct peripheral cytosolic proteins, alpha, beta and gamma-catenin (102, 94 and 86 kDa) found in many tissues bind to the conserved cytoplasmic tail domain of the cell-adhesion cadherins. Catenins link E-cadherin to other integral membrane or cytoplasmic proteins and are modulated by Wnt-1 proto-oncogene. They are good candidates for mediating transduction of cell-cell contact positional signals to the cell interior. Absence of alpha-catenin is found in certain tumor cell lines and reduced levels in certain human carcinomas. Beta-catenin binds directly to the cytoplasmic tail of E-cadherin. It binds to the N-terminus of alpha-catenin and interacts with the protein product of the tumor suppressor gene APC. This interaction involves a 15-aa repeat in the APC. Beta-catenin cell levels seem to be controlled by APC. The central core region of beta-catenin is involved in mediation of cadherin-catenin complex interaction with EGFR.

**Synonyms:**

Alpha E-catenin, Alpha Catenin

**Note:**

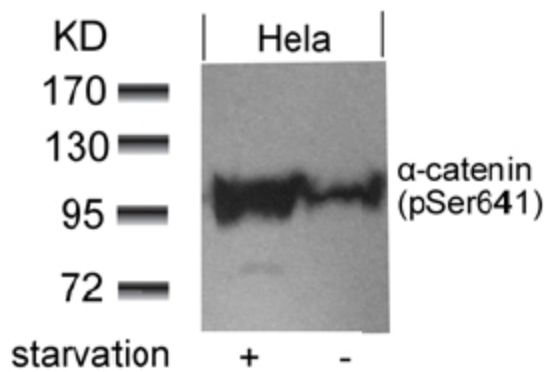
Molecular Weight: 100 kDa

**Protein Families:**

Druggable Genome

**Protein Pathways:**

Adherens junction, Arrhythmogenic right ventricular cardiomyopathy (ARVC), Endometrial cancer, Leukocyte transendothelial migration, Pathways in cancer, Tight junction

**Product images:**

Western blot analysis of extracts from HeLa cells untreated or treated with starvation using Alpha-Catenin pSer641 antibody.