

## Product datasheet for **AP09464PU-N**

### PTP4A3 Rabbit Polyclonal Antibody

#### Product data:

Product Type:	Primary Antibodies
Applications:	WB
Recommended Dilution:	Western blot: 1/500~1/1000.
Reactivity:	Human, Mouse
Host:	Rabbit
Clonality:	Polyclonal
Immunogen:	The antiserum was produced against synthesized phosphopeptide derived from human PRL-3 around the site of 160.
Specificity:	Antibody AP09464PU detects transfected PRL-3 protein.
Formulation:	PBS (without Mg <sup>2+</sup> and Ca <sup>2+</sup> ), pH 7.4, 150 mM NaCl, 0.02% Sodium Azide and 50% Glycerol. State: Aff - Purified State: Liquid purified Ig fraction.
Concentration:	lot specific
Purification:	Immunoaffinity Chromatography using epitope-specific immunogen.
Conjugation:	Unconjugated
Storage:	Store the antibody (in aliquots) at -20°C. Avoid repeated freezing and thawing.
Stability:	Shelf life: One year from despatch.
Gene Name:	protein tyrosine phosphatase type IVA, member 3
Database Link:	<a href="#">Entrez Gene 19245 Mouse</a> <a href="#">Entrez Gene 11156 Human</a> <a href="#">O75365</a>
Background:	PTP4A3 protein tyrosine phosphatase which stimulates progression from G1 into S phase during mitosis. It enhances cell proliferation, cell motility and invasive activity, and promotes cancer metastasis. It may be involved in the progression of cardiac hypertrophy by inhibiting intracellular calcium mobilization in response to angiotensin II. PTP4A3 interacts with tubulin. It belongs to the protein tyrosine phosphatase family. It is mainly expressed in cardiomyocytes and skeletal muscle; also found in pancreas. It is consistently overexpressed in colon cancer metastasis.



[View online »](#)

Synonyms: PRL-3, PRL-R

Protein Families: Druggable Genome, Phosphatase

**Product images:**

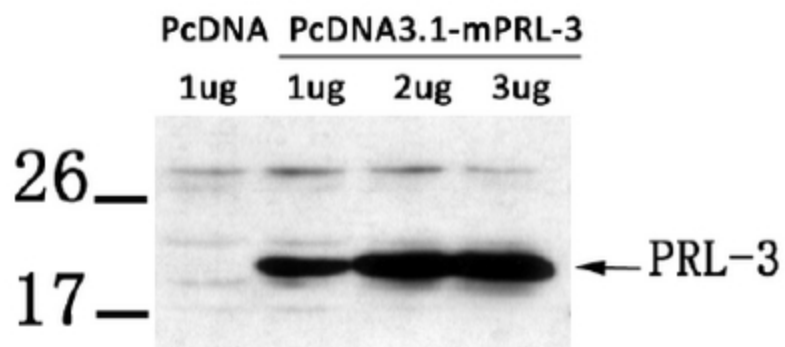


Figure 1. Western blot analysis of extract from LX-2 cells transfected with PRL-3, using PRL-3 antibody.