

## Product datasheet for **AP09459PU-N**

### Cytokeratin 8 (KRT8) pSer74 Rabbit Polyclonal Antibody

#### Product data:

Product Type:	Primary Antibodies
Applications:	IF, WB
Recommended Dilution:	Western Blot: 1/500~1/1000. Immunofluorescence: 1/100~1/200.
Reactivity:	Human
Host:	Rabbit
Clonality:	Polyclonal
Immunogen:	The antiserum was produced against synthesized phosphopeptide derived from Human Cytokeratin 8 around the phosphorylation site of Serine 74 (L-L-SP-P-L)
Specificity:	This antibody detects endogenous levels of Keratin 8 only when phosphorylated at Serine 74.
Formulation:	PBS (without Mg <sup>2+</sup> and Ca <sup>2+</sup> ), pH 7.4 containing 150mM NaCl, 0.02% Sodium Azide and 50% Glycerol. State: Aff - Purified State: Liquid purified IgG fraction.
Concentration:	lot specific
Purification:	Affinity Chromatography using epitope-specific phosphopeptide. The antibody against non-phosphopeptide was removed by chromatography using non-phosphopeptide corresponding to the phosphorylation site.
Conjugation:	Unconjugated
Storage:	Store the antibody (in aliquots) at -20°C. Avoid repeated freezing and thawing.
Stability:	Shelf life: one year from despatch.
Gene Name:	keratin 8
Database Link:	<a href="#">Entrez Gene 3856 Human P05787</a>



[View online »](#)

**Background:**

Cytokeratin 8 belongs to the type B (basic) subfamily of high molecular weight keratins and exists in combination with cytokeratin 18. Cytokeratin 8 is primarily found in the non squamous epithelia and is present in majority of adenocarcinomas and ductal carcinomas. It is absent in squamous cell carcinomas. Hepatocellular carcinomas are defined by the use of antibodies that recognize only cytokeratin polypeptides 8 and 18.

**Synonyms:**

KRT8, CYK8, Cytokeratin-8, CK8, Keratin-8, K8, Cytokeratin endo A

**Product images:**

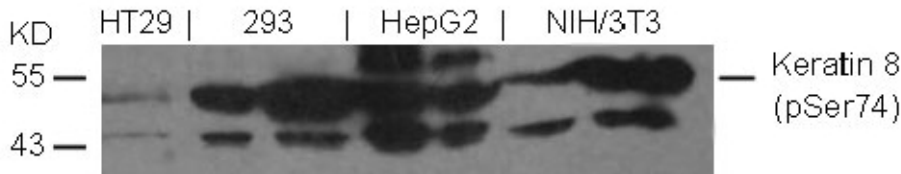


Figure 2. Western blot analysis of various cell extracts using Keratin 8 (Phospho-Ser74) Antibody

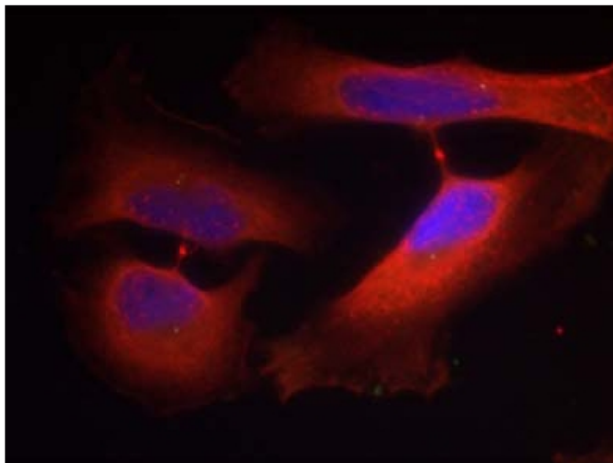


Figure 1. Immunofluorescence staining of methanol-fixed HeLa cells using Keratin 8 (Phospho-Ser74) Antibody (Red).