

Product datasheet for **AP09458PU-N**

Chk1 (CHEK1) pSer280 Rabbit Polyclonal Antibody

Product data:

Product Type:	Primary Antibodies
Applications:	WB
Recommended Dilution:	Western Blot: 1/500~1/1000.
Reactivity:	Human
Host:	Rabbit
Clonality:	Polyclonal
Immunogen:	The antiserum was produced against synthesized phosphopeptide derived from human Chk1 around the phosphorylation site of Serine 280 (V-T-Sp-G-G).
Specificity:	This antibody detects endogenous levels of Chk1 only when phosphorylated at Serine 280.
Formulation:	PBS (without Mg ²⁺ and Ca ²⁺), pH 7.4 containing 150mM NaCl, 0.02% Sodium Azide and 50% Glycerol. State: Aff - Purified State: Liquid purified IgG fraction.
Concentration:	lot specific
Purification:	Affinity Chromatography using epitope-specific phosphopeptide. The antibody against non-phosphopeptide was removed by chromatography using non-phosphopeptide corresponding to the phosphorylation site.
Conjugation:	Unconjugated
Storage:	Store the antibody (in aliquots) at -20°C. Avoid repeated freezing and thawing.
Stability:	Shelf life: one year from despatch.
Gene Name:	checkpoint kinase 1
Database Link:	Entrez Gene 1111 Human O14757



[View online »](#)

Background:

One mechanism by which checkpoints maintain the fidelity of cell cycle events is through blocking mitosis in response to unreplicated or damaged DNA. In most species this occurs through inhibiting activation of the cyclic dependent kinase Cdc2, which regulates entry into mitosis. Chk1, a kinase involved in the DNA damage checkpoint response can phosphorylate Cdc25C an activator of Cdc2. It is hypothesized that Chk1 induces serine 216 phosphorylation of Cdc25C and subsequent 14-3-3 binding negatively regulated Cdc25C, thus preventing it from activating Cdc2.

Synonyms:

CHEK1, CHEK-1

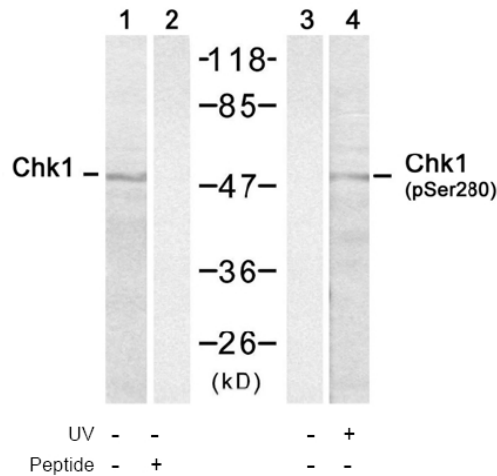
Product images:


Figure 1. Western blot analysis of extracts from HL-60 cells using Chk1 antibody (Lane 1 and 2) and Chk1 (phospho-Ser280) antibody (Lane 3 and 4).