

Product datasheet for **AP09395PU-N**

ABCB5 Rabbit Polyclonal Antibody

Product data:

Product Type:	Primary Antibodies
Applications:	ELISA, WB
Recommended Dilution:	ELISA: 1/10,000-1/50,000. Western Blot: 1/20,000.
	<u>Trial Size:</u> ELISA: 1/10,000- 1/15,000. Western Blot: 1/10,000.
Reactivity:	Human, Monkey
Host:	Rabbit
Isotype:	IgG
Clonality:	Polyclonal
Immunogen:	Synthetic peptide corresponding to residues corresponding to an internal region of Human ABCB5
Specificity:	This antibody is specific for ABCB5 protein.
Formulation:	0.02M Potassium Phosphate, 0.15M Sodium Chloride, pH 7.2 containing 0.01% (w/v) Sodium Azide State: Aff - Purified State: Liquid purified Ig fraction
Concentration:	lot specific
Purification:	Affinity Chromatography
Conjugation:	Unconjugated



[View online »](#)

Storage: Store the antibody at -20°C.
Avoid repeated freezing and thawing.
Shelf life: one year from despatch.

Storage Conditions for Trial Size:

This vial contains a relatively low volume of reagent (25 µl). To minimize loss of volume dilute 1:10 by adding 225 µl of the buffer stated above directly to the vial. Recap, mix thoroughly and briefly centrifuge to collect the volume at the bottom of the vial. Use this intermediate dilution when calculating final dilutions as recommended below.

Stability: Shelf life: 3 month from despatch.

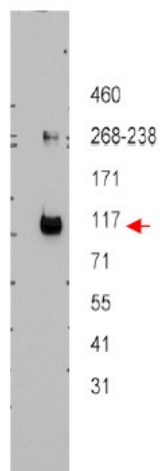
Gene Name: ATP binding cassette subfamily B member 5

Database Link: [Entrez Gene 340273 Human Q2M3G0](#)

Background: ATP-Binding Cassette proteins comprise a superfamily of transporters with a wide variety of substrates. ABCB5 is a novel member of the human P-glycoprotein family. It functions as a determinant of membrane potential and regulator of cell fusion in physiologic skin progenitor cells. Cell fusion is thought to contribute to tissue differentiation. ABCB5 is predominantly expressed in melanoma cells and is a novel molecular marker for a distinct subset of chemoresistant stem cell phenotype-expressing tumor cells among human epidermal melanocytes. It has been identified as a novel drug transporter in human malignant melanoma. ABCB5 is a rhodamine efflux transporter. This antibody product is intended to be used to confirm cellular localization and expression level of ABCB5.

Synonyms: ABCB5alpha; ABCB5beta; EST422562

Product images:



Western blot using affinity purified anti-ABCB5 antibody shows detection of ABCB5 beta in ~12.5 µg of transfected-Hi5 whole cell lysate. No reaction was seen when antibody was pre-incubated with the immunizing peptide (data not shown). A 3-8% Tris-acetate gel was used for separation. The arrowhead corresponds to 117 kDa ABCB5. The membrane was probed with the primary antibody at a 1:10,000 dilution in 5% milk in TBST at 4°C, overnight.