

Product datasheet for **AP09394PU-S**

PKC beta 1 (PRKCB) Rabbit Polyclonal Antibody

Product data:

Product Type:	Primary Antibodies
Applications:	ELISA, WB
Recommended Dilution:	ELISA: 1/75,000 - 1/80,000. Western Blot: 1/1,000 - 1/2,000.
Reactivity:	Bovine, Human, Monkey, Mouse, Rabbit, Rat
Host:	Rabbit
Isotype:	IgG
Clonality:	Polyclonal
Immunogen:	Synthetic peptide corresponding to an internal region of human Protein kinase C beta
Specificity:	This antibody is specific for PKC beta protein.
Formulation:	0.02 M Potassium Phosphate, 0.15 M Sodium Chloride, pH 7.2 containing 0.01% (w/v) Sodium Az State: Aff - Purified State: Liquid
Concentration:	lot specific
Purification:	Affinity chromatography
Conjugation:	Unconjugated
Storage:	Store the antibody at -20°C. Avoid repeated freezing and thawing.
Stability:	Shelf life: one year from despatch.
Gene Name:	protein kinase C beta
Database Link:	Entrez Gene 5579 Human P05771



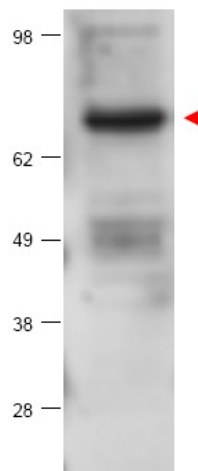
[View online »](#)

Background:

Protein kinase C (PKC) beta is implicated as a potential important factor in cancer cell proliferation and angiogenesis. PKC is a family of serine- and threonine-specific protein kinases that can be activated by calcium and second messenger diacylglycerol. PKC family members phosphorylate a wide variety of protein targets and are known to be involved in diverse cellular signaling pathways. PKC family members also serve as major receptors for phorbol esters, a class of tumor promoters. Each member of the PKC family has a specific expression profile and is believed to play a distinct role in cells. The protein encoded by this gene is one of the PKC family members. This protein kinase has been reported to be involved in many different cellular functions, such as B cell activation, apoptosis induction, endothelial cell proliferation, and intestinal sugar absorption. Studies in mice also suggest that this kinase may also regulate neuronal functions and correlate fear-induced conflict behavior after stress. Alternatively spliced transcript variants encoding distinct isoforms have been reported.

Synonyms:

PKC-beta, PKC beta, PKC-B, PKCB, PRKCB1, Protein kinase C beta type

Product images:

Western blot using affinity purified anti-PKC beta antibody shows detection of PKC beta in ~25 ug of U251 whole cell lysate (glioma derived). A 4-12% gel was used for separation. The arrowhead corresponds to 76 kDa PKC beta. The membrane was probed with the primary antibody at a 1:1,000 dilution in 5% BSA in TTBS at 4°C, overnight.